

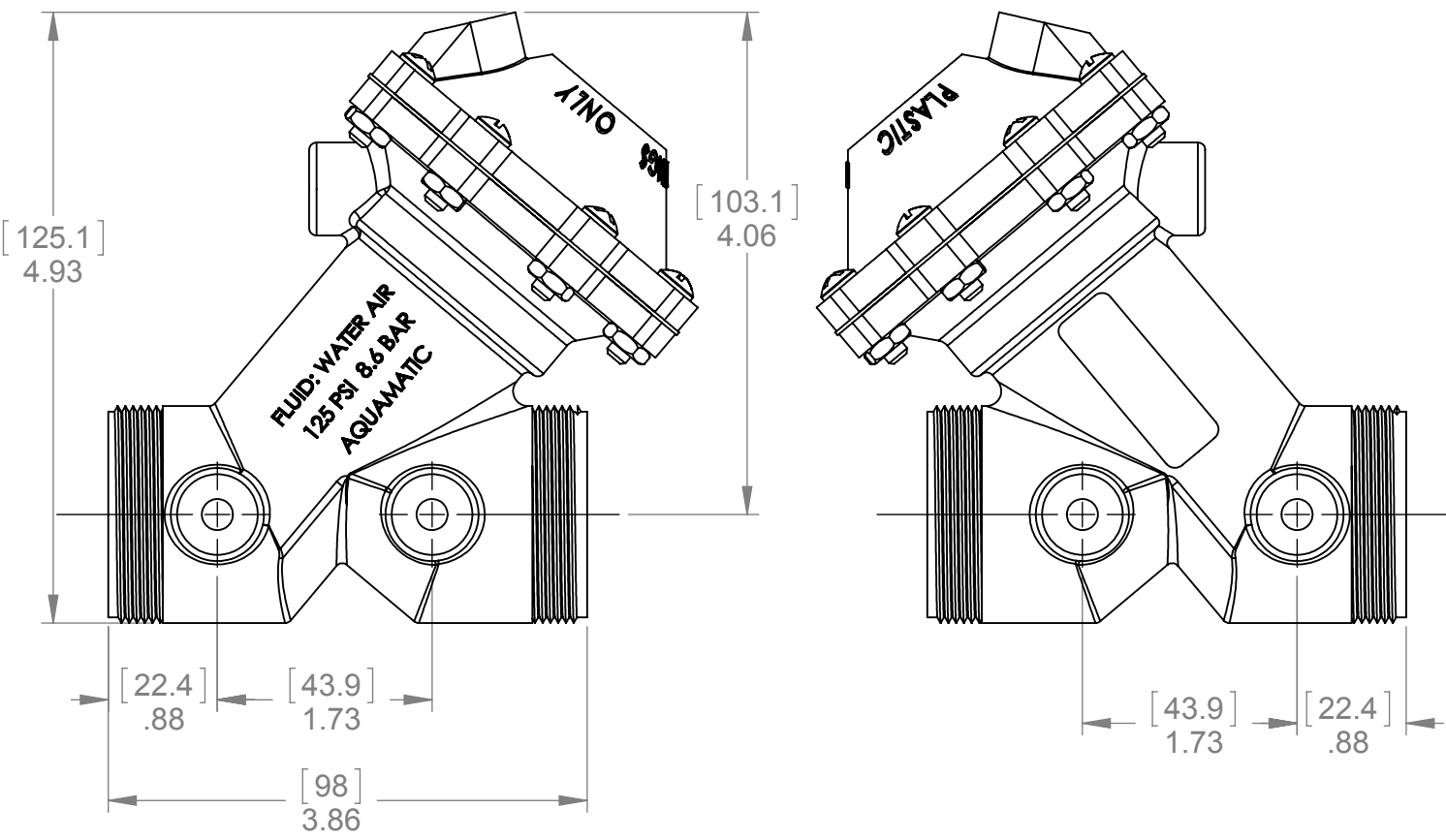
5

4

3

2

1



ASSEMBLY TOOLS	
DESCRIPTION	PART NO.
FOR INSTALLATION & REMOVAL OF SHAFT GUIDE (ITEM #5)	1075059 (521-Z)
TO HOLD SHAFT (ITEM #4) DURING ASSEMBLY/ DISSEMBLY	1077837

REVISIONS					
ZONE	ECN	REV.	DESCRIPTION	DATE	APP'D
	102568	J	REDRAWN IN SOLIDWORKS:ITEM #1: WAS 1075007, ITEM #11: WAS 1075012 ITEM #37: WAS 1075010, 4- FORM # NOW DWG #	31OCT13	TJM
	103697	K	ITEM #14- WAS: 1071942, 1071943, 1071944	12DEC14	TJM
	1001	L	AQ Matic update & verified part numbers	17JAN17	MGS

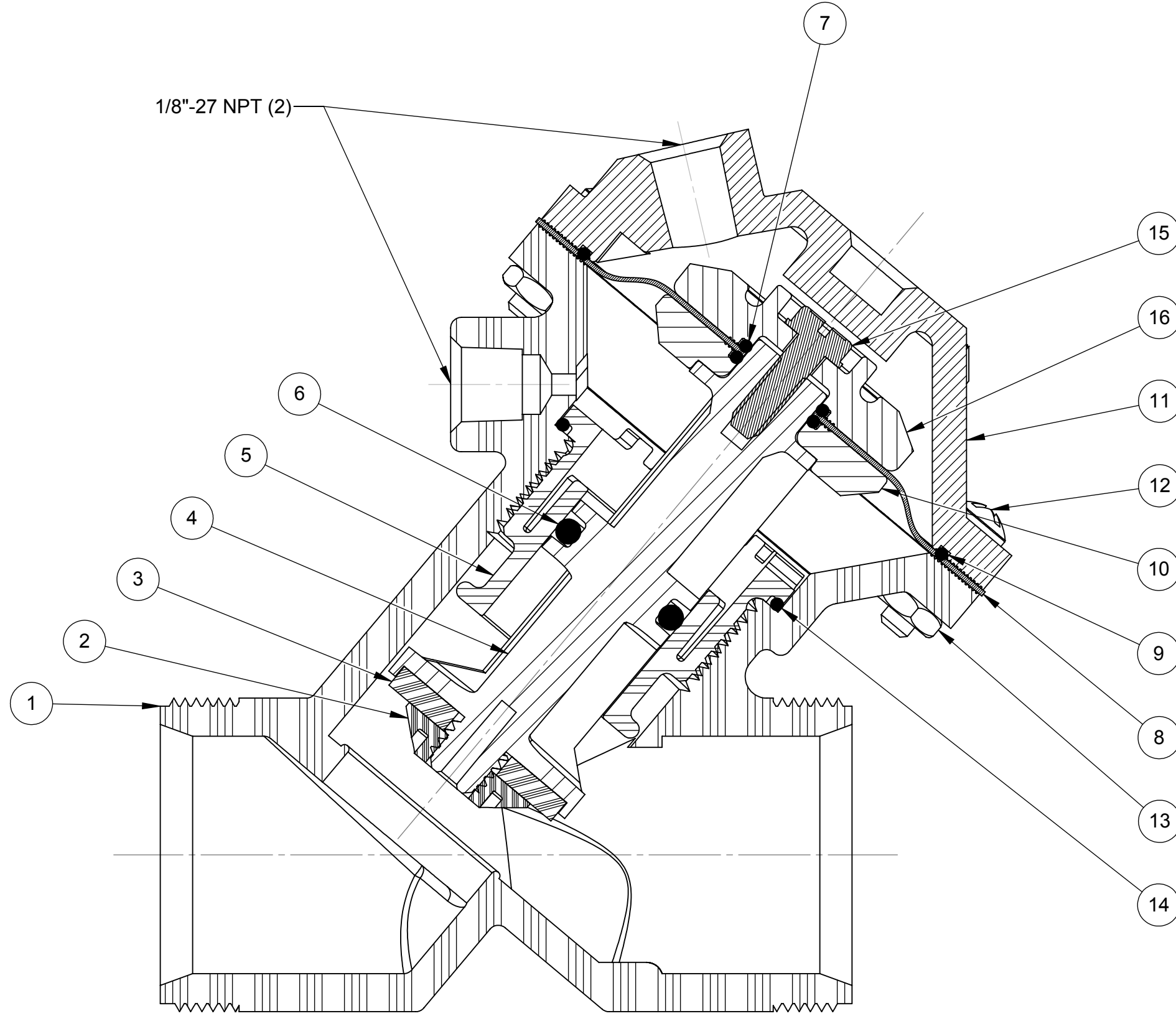
ITEM NO.	DESCRIPTION	PART NUMBER	QTY.
1	BODY, VALVE 521	43476	1
2	PLATE, DISC, 521	1075845	1
3	DISC, 521	EPDM 1077814	1
		BUTYL 1077815	
		FKM 1077816	
4	SHAFT, 521	NORYL 1075842	1
5	GUIDE,SHAFT,521	NORYL 1075030	1
6	O-RING, 2-208	EPDM 1071743	1
		BUTYL 1071775	
		FKM 1071814	
7	O-RING, -014	EPDM 1071718	2
		FKM 1071788	
8	DIAPHRAGM, 521	BUNA 1075028	1
		FKM 1075029	
9	O-RING 2-805	BUNA 1071715	1
10	PLATE,DIAPHRAGM,521,LOWER	43043	1
11	CAP, 521 VALVE	43477	1
12	SCREW, RHMS 10-32	SS 1072380	8
13	HEX NUT, 10-32	SS 1071648	8
14	O-RING, 2-029	EPDM 1081945	1
		BUTYL 43893	
		FKM 1081947	
15	SCREW, CUTTING #10-16 TYPE BT	1077783	1
16	PLATE,DIAPHRAGM,521,UPPER	43042	1

REPAIR PARTS		
DESCRIPTION	PART NO.	
DIAPHRAGM & SEALS KIT CONSISTS OF ITEM NO'S 3,6,7,8,9,15	1081792 (521-RAN) BUTYL INCLUDES DIAPHRAGM 1075028 (521-FB)	1081791(521-RAJN) BUTYL INCLUDES DIAPHRAGM 1075028 (521-FB)
	1081796 (521-RAVN) FKM INCLUDES DIAPHRAGM 1075028 (521-FB)	1081795 (521-RAVFN) E.P.D.M. INCLUDES DIAPHRAGM 1075029 (521-FV)
INT. PARTS KIT (NORM. OPEN) CONSISTS OF ITEM NO'S 2,4,5,10,11,16	1079621 (K521-RFN)	

SEE REVERSE SIDE FOR CONFIGURATION OPTIONS

SEE FORM 1078142 FOR UNION END CONNECTORS AND GROOVED ADAPTERS

COMPONENTS/ASSEMBLIES TO BE COMPLIANT AND COMPATIBLE WITH EUROPEAN UNION DIRECTIVE 2002/95/EEC (RoHS) REQUIREMENTS.



1070154 (K521-X200-14000)  
NORMALLY OPEN (STANDARD)

COMPONENTS / ASSEMBLIES TO BE COMPLIANT AND COMPATIBLE WITH EUROPEAN UNION DIRECTIVE 2011/65/EEC (RoHS2) & REGULATION (EC)1907/2006 (REACH) REQUIREMENTS

THIS DOCUMENT IS SOLELY THE PROPERTY OF AQ Matic VALVE & CONTROLS COMPANY INC. REPRODUCTION, USE, DISCLOSURE, OR TRANSMISSION OF THIS DOCUMENT OR DETAILS CONTAINED HEREIN, IN PART OR IN WHOLE, IS PROHIBITED WITHOUT THE WRITTEN CONSENT OF AQ Matic ENGINEERING. THIS DOCUMENT AND ANY COPIES SHALL BE RETURNED TO AQ Matic UPON REQUEST.

DO NOT SCALE DRAWING. DIMS. ARE IN INCHES [mm] INTERPRET DIMS AND TOLERANCES PER ASME Y14.5M -2009 UNLESS OTHERWISE SPECIFIED. ALL FINISHED MACHINED SURFACES 125 ✓ OR BETTER. TOLERANCES:  
 ANGLES: ± 1°  
 1 PLACE .X: ± .015 [0.38]  
 2 PLACE .XX: ± .01 [0.3]  
 3 PLACE .XXX: ± .005 [0.13]

THIRD ANGLE PROJECTION

APPROVALS: ANH DATE: 8/29/13

DRAWN: ANH DATE: 8/29/13

APPROVED:

CHECKED:

AQ Matic Valve & Controls Company Inc.

TITLE: CATALOG SHEET, 521 DIAPHRAGM VALVE STANDARD MODEL

SIZE: B DWG NO.: BR1077654 REV: L

SCALE: 1:1 SHEET 1 OF 2

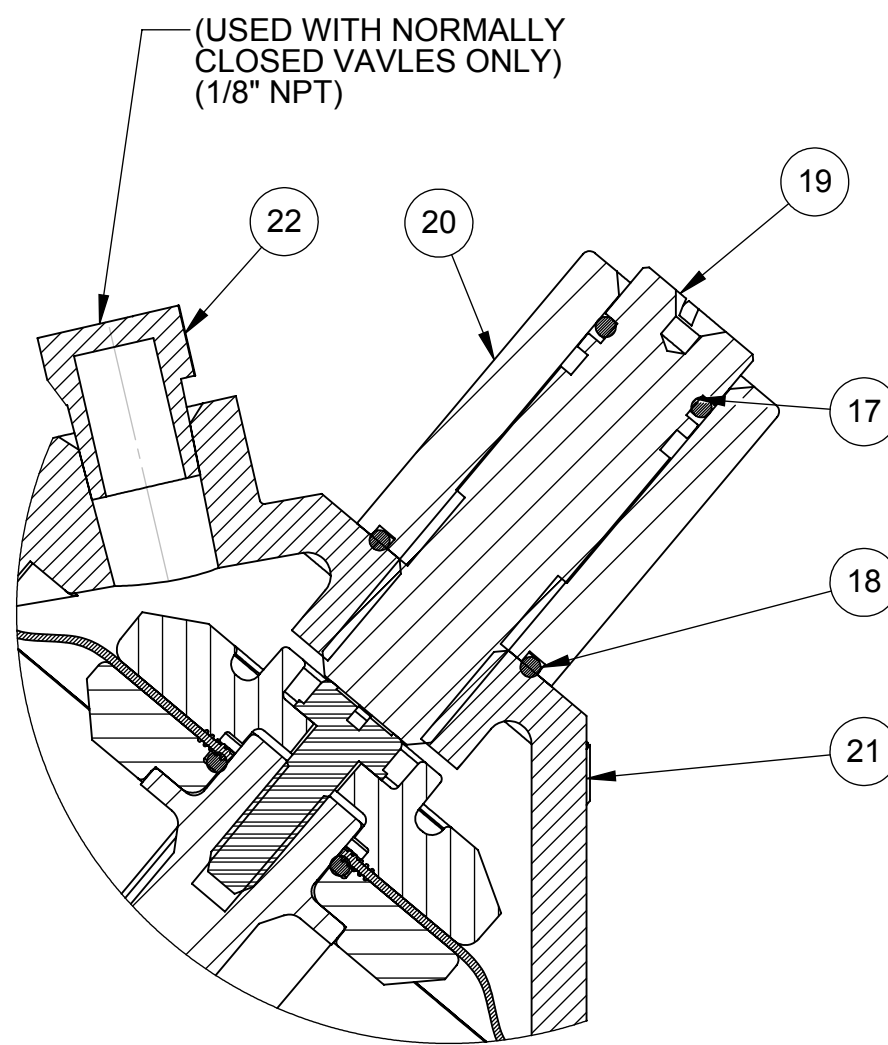
5

4

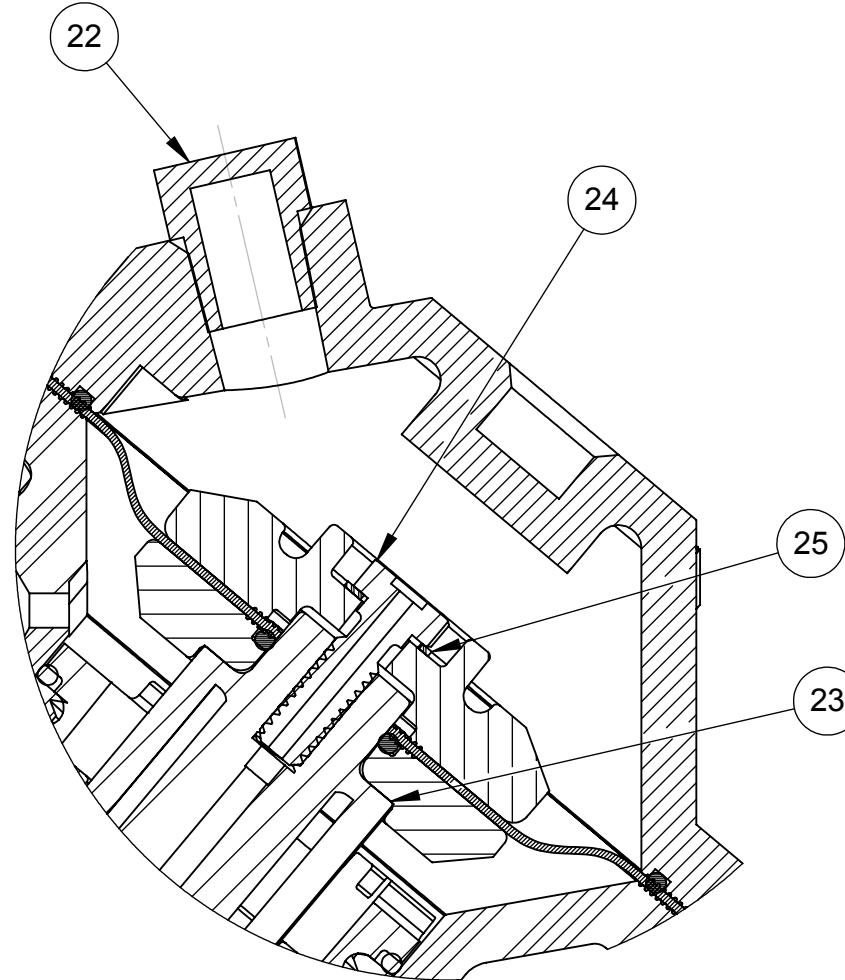
3

2

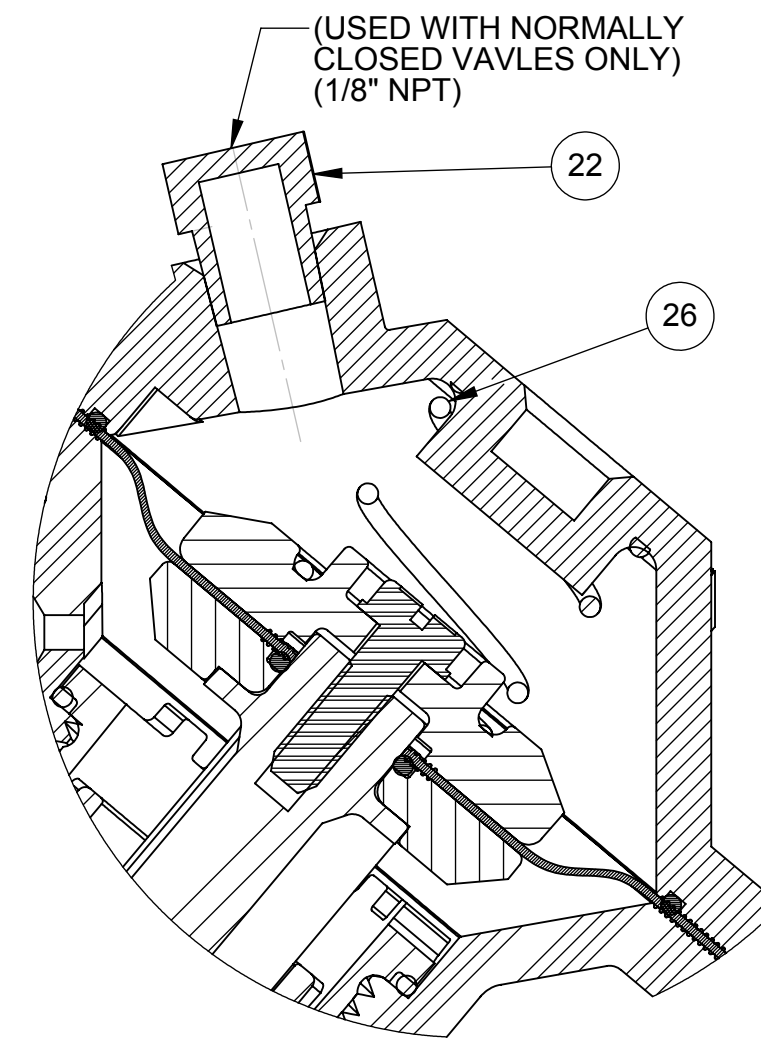
1



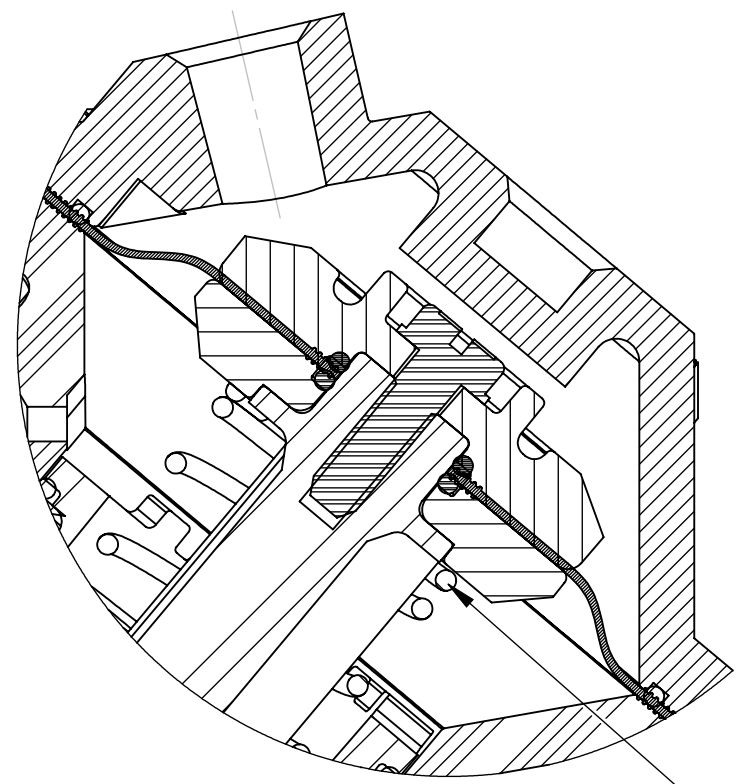
1070155 (K521-X210-14000)  
**LIMIT STOP**



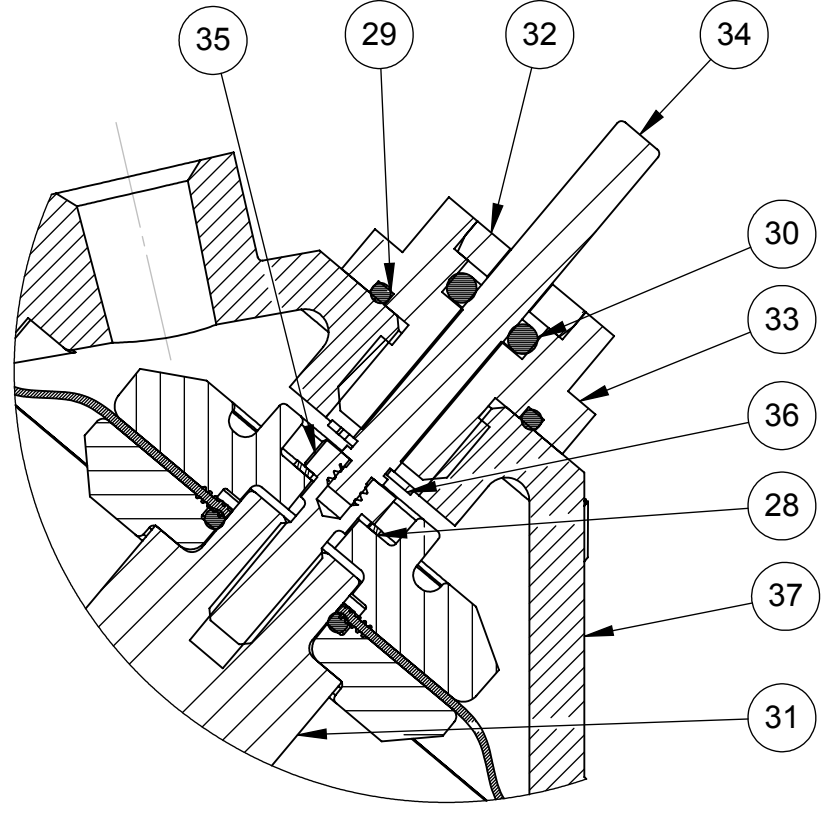
1070159 (K521-X230-14000)  
**NORMALLY CLOSED**



1070157 (K521-X202-14000)  
**SPRING ASSIST CLOSED**



1070158 (K521-X201-14000)  
**SPRING ASSIST OPEN**



1071143 (K521-X221-14000)  
**POSITION INDICATOR**

- NOTE:
1. POSITION INDICATOR MODEL CANNOT BE COMBINED WITH NORMALLY CLOSED OR LIMIT STOP OPTIONS.
  2. POSITION INDICATOR MODEL FURNISHED WITH SPRING ASSIST OPEN OPTION.

REVISIONS					
ZONE	ECN	REV.	DESCRIPTION	DATE	APP'D
			SEE SHEET 1 FOR LIST OF CHANGES		

LIMIT STOP			
ITEM NO.	DESCRIPTION	PART NUMBER	QTY.
17	O-RING,2-012,BUNA	1071668	1
18	O-RING,2-016,BUNA	1071671	1
19	LIMIT STOP SCREW, SS	1075058	1
20	LIMIT STOP NUT, SS	1075057	1
21	CAP, 521, LIMIT STOP	43724	1
NORMALLY CLOSED MODEL			
22	MALE PIPE PLUGS,1/8"	1071912	1
23	SHAFT, 521,NORYL	1077909	1
24	SCREW, 521, DIA PLT, NC	1077830	1
25	WASHER, LOCK,INTERNAL,#10,SS	1078992	1
SPRING ASSIST CLOSED MODEL			
26	SPRING, COMPRESSION	1075051	1
SPRING ASSIST OPEN MODEL			
27	SPRING, COMPRESSION	1236766	1
POSITION INDICATOR MODEL			
28	WASHER, LOCK,INTERNAL,#10,SS	1078992	1
29	O-RING,2-016,BUNA	1071671	1
30	O-RING,2-106,BUNA	1071687	1
31	SHAFT, POSITION INDICATOR, 521	1077911	1
32	PLUG, GUIDE HOUSING, 520	1074971	1
33	GUIDE HOUSING, 521	1075038	1
34	ROD, POS. INDICATOR, (521)	1078062	1
35	SCREW, 521, DIA PLT, PI	1077832	1
36	E-RING,	1076200	1
37	CAP, 521, PI, LS	43724	1

SEE FORM 1078142 FOR UNION END CONNECTORS AND GROOVED ADAPTORS  
SEE SHEET 1 FOR STANDARD NORMALLY OPEN MODEL

CONVERSION KITS	
DESCRIPTION	PART NO.
CONVERSION KIT (LIMIT STOP) CONSISTS OF ITEM NO'S 17 THRU 21	1071090 (K521-LSC)
CONVERSION KIT (SPRING ASSIST CLOSED) CONSISTS OF ITEM NO. 26	1075054 (521-SC)
CONVERSION KIT (SPRING ASSIST OPEN) CONSISTS OF ITEM NO. 27	1075055 (521-SO)
CONVERSION KIT (POSITION INDICATOR) CONSISTS OF ITEM NO'S 28 THRU 37	1079620 (K521-PICN)

REPAIR PARTS KITS	
DESCRIPTION	PART NO.
INT. PARTS KIT (LIMIT STOP) CONSISTS OF ITEM NO'S 17 THRU 21	1075040 (521-LS)
INT. PARTS KIT (NORM. CLOSED) CONSISTS OF ITEM NO'S 2,5,10,11,23,24,25	1079622 (K521-RGN)
INT. PARTS KIT (SPRING ASSIST CLOSED) CONSISTS OF ITEM NO. 26	1075054 (521-SC)
INT. PARTS KIT (SPRING ASSIST OPEN) CONSISTS OF ITEM NO. 27	1075055 (521-SO)
INT. PARTS KIT (POSITION INDICATOR) CONSISTS OF ITEM NO'S 28 THRU 37	1081790 (521-PIN)

COMPONENTS / ASSEMBLIES TO BE COMPLIANT AND COMPATIBLE WITH EUROPEAN UNION DIRECTIVE 2011/65/EEC (ROHS2) & REGULATION (EC)1907/2006 (REACH) REQUIREMENTS

THIS DOCUMENT IS SOLELY THE PROPERTY OF AQ Matic VALVE & CONTROLS COMPANY INC. REPRODUCTION, USE, DISCLOSURE, OR TRANSMISSION OF THIS DOCUMENT OR DETAILS CONTAINED HEREIN, IN PART OR IN WHOLE, IS PROHIBITED WITHOUT THE WRITTEN CONSENT OF AQ Matic ENGINEERING. THIS DOCUMENT AND ANY COPIES SHALL BE RETURNED TO AQ Matic UPON REQUEST.

DO NOT SCALE DRAWING. DIMS. ARE IN INCHES [mm]  
INTERPRET DIMS AND TOLERANCES PER ASME Y14.5M -2009  
UNLESS OTHERWISE SPECIFIED:  
ALL FINISHED MACHINED SURFACES 125 √ OR BETTER.  
TOLERANCES:  
ANGLES: ± 1°  
1 PLACE .X: ± .015 [0.38]  
2 PLACE .XX: ± .01 [0.3]  
3 PLACE .XXX: ± .005 [0.13]

THIRD ANGLE PROJECTION	APPROVALS	DATE
	NE	02-22-13
	APPROVED	
	CHECKED	

**AQ Matic** Valve & Controls Company Inc.

TITLE: CATALOG SHEET, 521  
DIAPHRAGM VALVE STANDARD MODEL

SIZE: **B** DWG NO. **BR1077654** REV: **L**

SCALE: 1:2 SHEET 2 OF 2