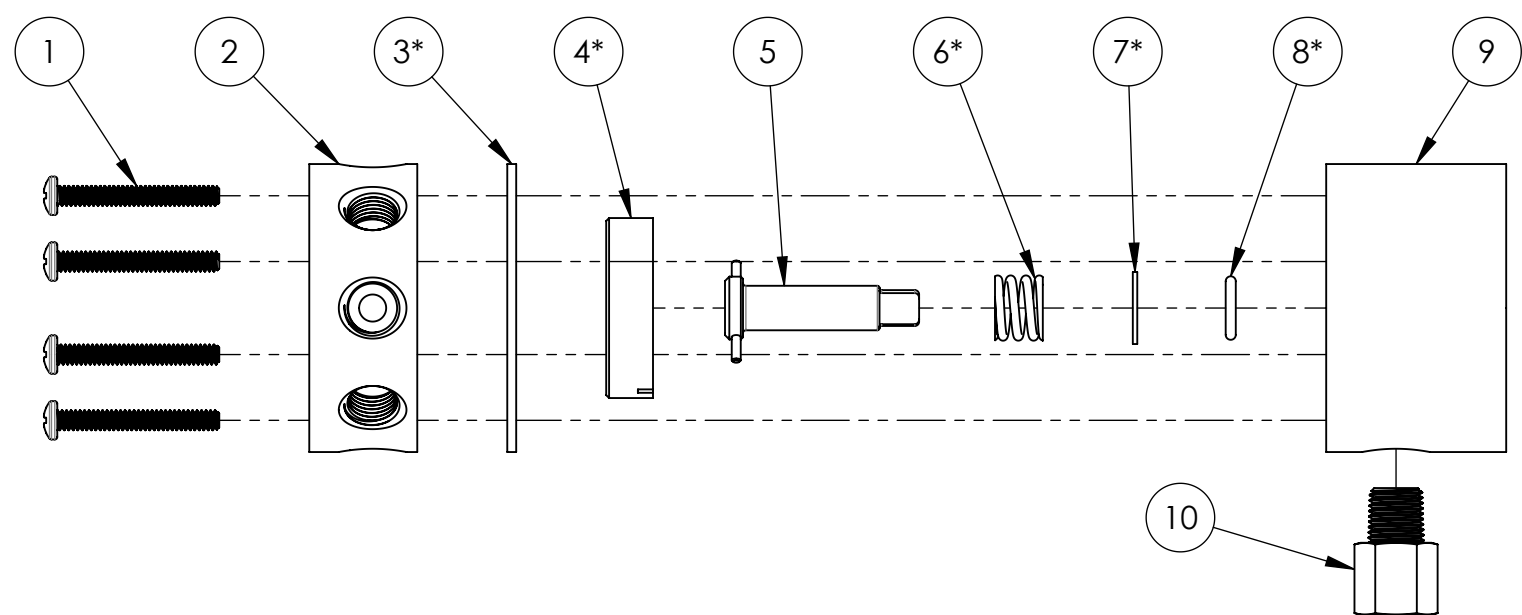
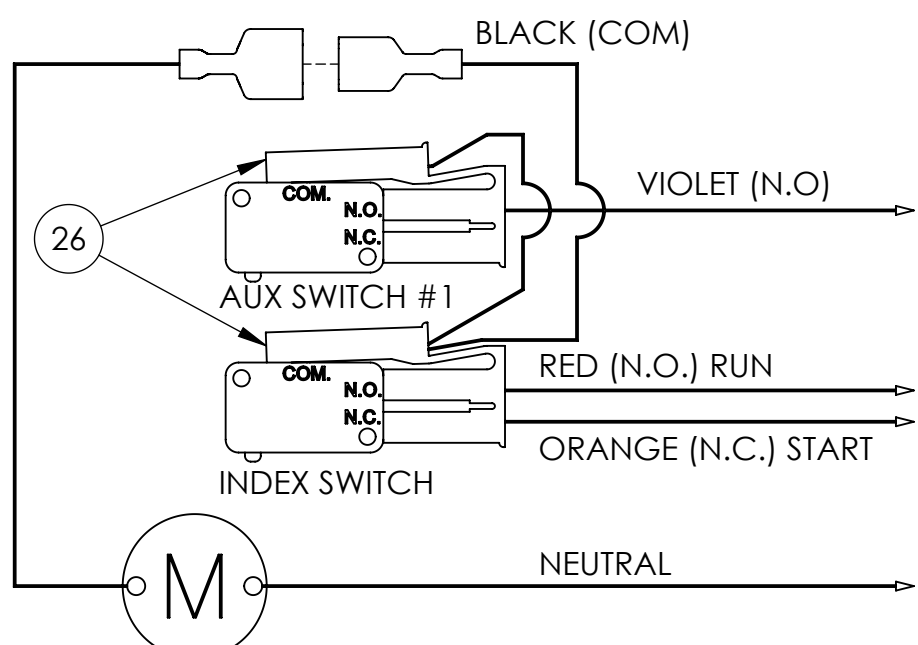


### PILOT CONTROL ASSEMBLY

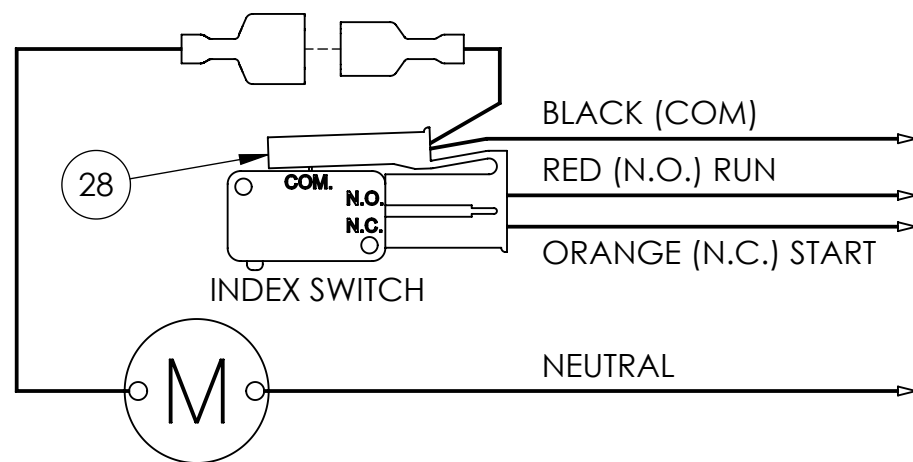


REVISIONS				
REV	DESCRIPTION	DATE	APPROVED	
C	NUMBER CONVERSION	12/13/2002	MSM	
2474 D	REDRAWN IN AQ-MATIC FORMAT, MOTOR UPDATE	11/18/2024	PMJ	

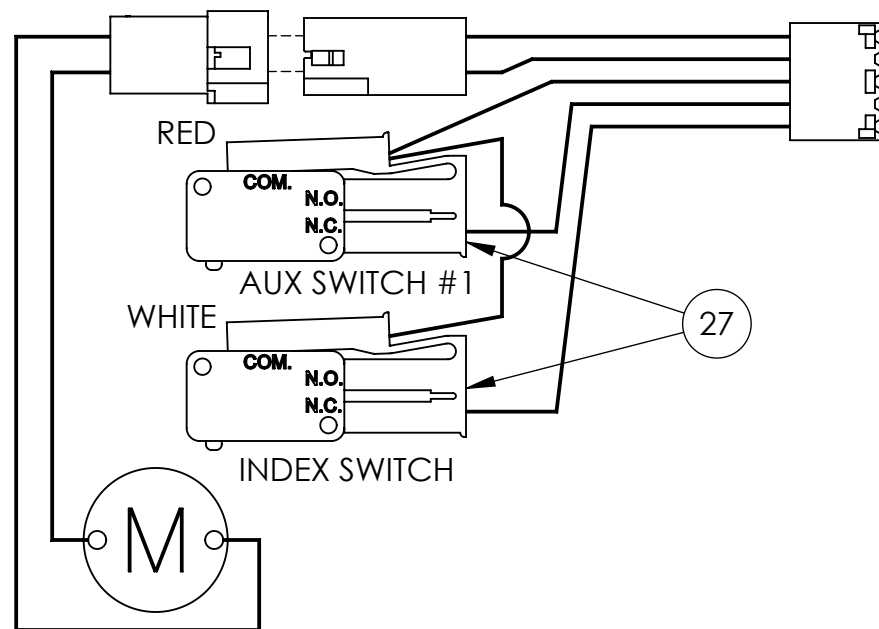
### CYCLE & HOMING SWITCHES



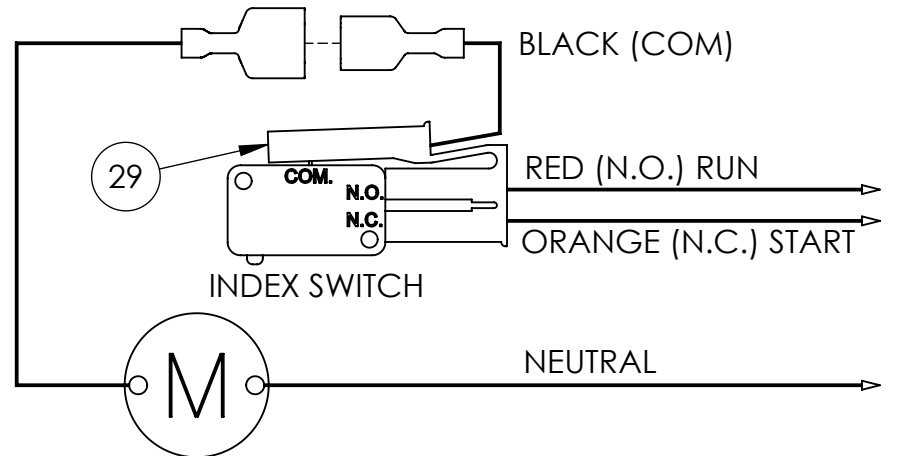
### STANDARD CYCLE SWITCH



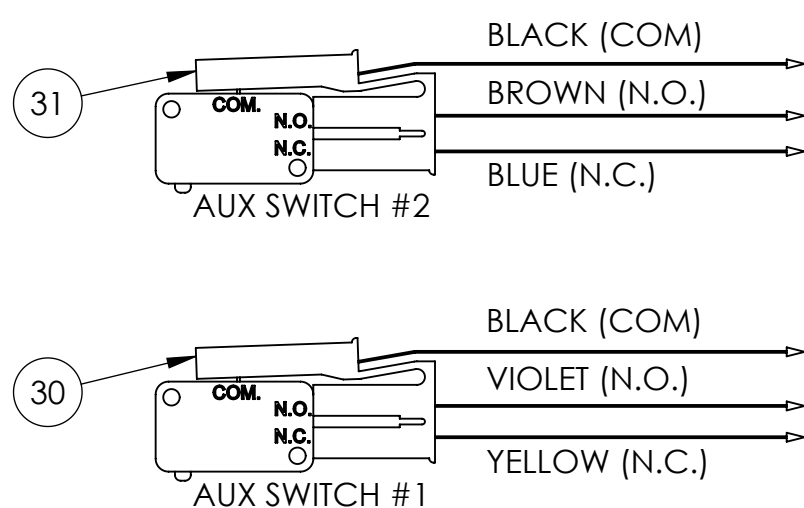
### NXT CYCLE & HOMING SWITCHES



### CYCLE ONLY SWITCH



### OPTIONAL AUX SWITCHES MAXIMUM OF 2X



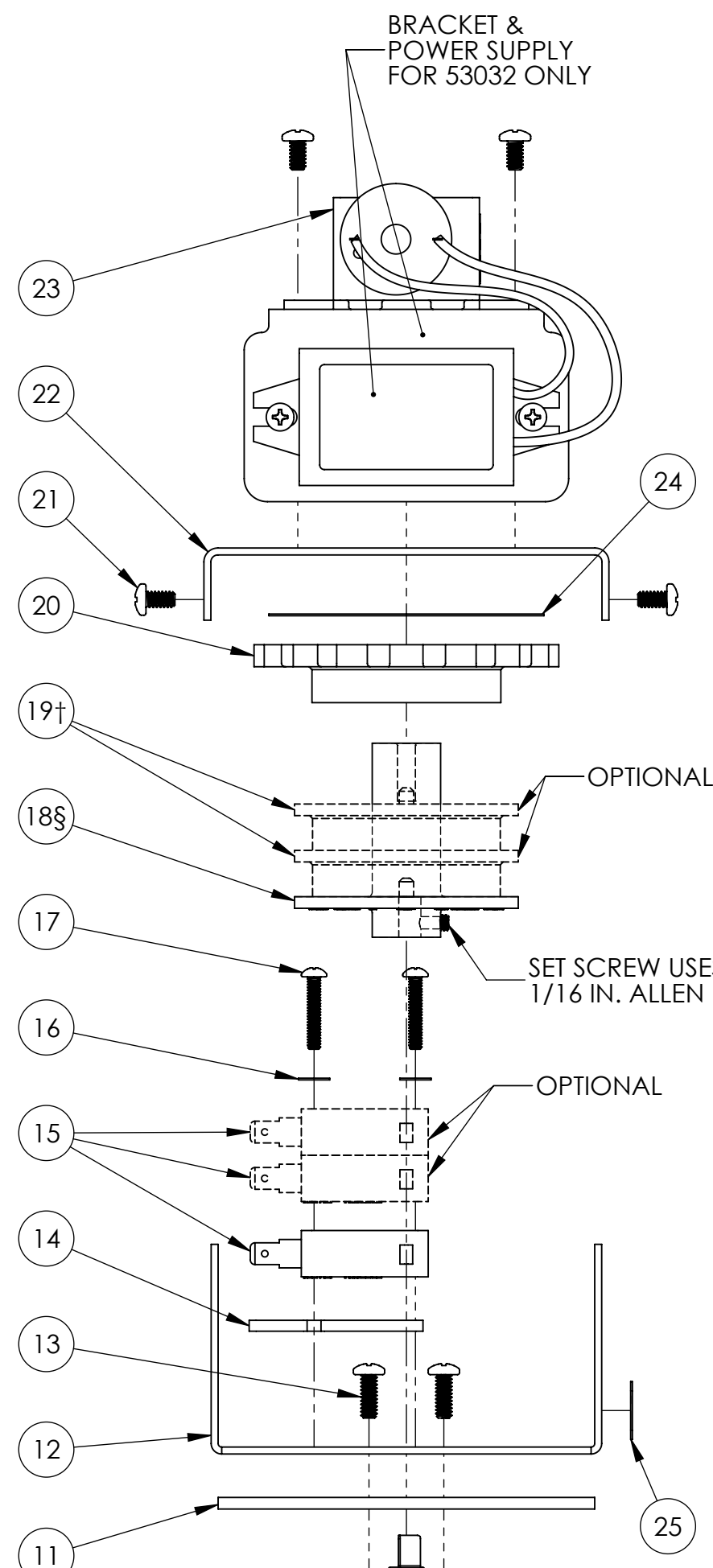
### SWITCH RATINGS

11A 1/3HP  
125, 250, 277 VAC  
1/2A 125 VDC  
4A 125 VAC L

### INTERNAL PARTS KITS

STAGER PROGRAM	INTERNAL PARTS KITS STANDARD PROGRAMS	INTERNAL PARTS KITS INVERTED PROGRAMS		
51-06				
51-07	1074888	51-IA-00		
51-09				
51-10	1074890	51-IA-10		
51-11	1074891	51-IA-11		
51-12	1074892	51-IA-12		
51-86	1074893	51-IA-86	1077587	51-IA-86I
51-87				
51-SS	1074887	51-IA-SS	SPECIFY DWG. NO. WHEN ORDERING THESE PARTS	

INTERNAL PARTS KITS INCLUDE ITEM NO. 3, 4, 6, 7, 8 ALONG WITH A SMALL PACKET OF SILICON LUBRICANT.



ITEM NO.	DESCRIPTION	PART NUMBER	MODEL	QTY.	
1	SCREW, 6-32 X 1 1/8" PAN HEAD	1075760	SCS-0076	4	
2	BACKPLATE, 51, BRASS	PER PROGRAM		1	
3*	GASKET, BACKPLATE, 51	1084172	96034	1	
4*	STEMPLATE, 51, ALPHA	PER PROGRAM		1	
5	STEM SHAFT ASSY, 51	1070438		1	
6*	SPRING, PILOT, 51	1075242	54-S	1	
7*	WASHER, .317" x .500" x .031"	1075241	54-R	1	
8*	O-RING, 2-011, EPDM	1071716	ORE-011	1	
9	BONNET, 51, BRASS	1074883	51-B	1	
10	INLET STRAINER ASSY	1074825	48-Q	1	
11	GASKET, STAGER MOUNT, 51	1075674		1	
12	PLATE, BOTTOM MOUNTING, STAGER	1070437		1	
13	SCREW, PHL P, PN HD, 6-32 X 3/8", SS	1072371	SCS-0070	2	
14	SWITCH INSULATOR	1075455	58B019	1	
15	SWITCH, MICRO	1075499	58013	3	
16	LOCK WASHER (NO. 4)	1073593	WAS-0015	2	
17	PAN HD. MACH. SCREW 4-40 THREAD	1 SWITCH	1072369	SCS-0064	2
		2 SWITCHES	1072389	SCS-0151	
		3 SWITCHES	1075757	SCS-0065	
18§	INDEXING CAM & SET SCREW	PER PROGRAM		1	
19†	CAM, AUXILIARY	PER PROGRAM		2	
20	THUMB WHEEL, STAGER	1075454	58B018	1	
21	SCREW, 6-32 X 1/4", PHIL, PAN	1075746		6	
22	PLATE, MOTOR MOUNTING	1070436		1	
23	MOTOR ASSY	100-265 VAC	53032	1	
		NXT ONLY	53031		
		12, 24 V	53030		
24	LABEL, DIAL, STGR, 2.375 X .875	PER PROGRAM		1	
25	LABEL, SERIAL NUMBER, 1.5" X .5"	42813U		1	
26	HARNES, STGR, CYCLE & HOMING	1075463	58B029	1	
27	HARNES, STAGER, NXT	40941		1	
28	HARNES, STGR, CYCLE & COMMON	1075464	58B030	1	
29	HARNES, STAGER, CYCLE ONLY	1075496	58010	1	
30	SWITCH WIRE ASSY, #1 AUX	1075501	58015	1	
31	SWITCH WIRE ASSY, #2 AUX	1075502	58016	1	

- NOTES:
- § - STAGER PROGRAM MUST BE SPECIFIED WHEN ORDERING THIS PART.
  - † - MUST SPECIFY IN WHICH POSITION(S) SWITCH OUTPUT(S) ARE REQUIRED.
  - \* - SUPPLIED AS A KIT ONLY.

INTERPRET DIMENSIONS AND TOLERANCES PER ASME Y14.5M-2018.  
PRIMARY UNITS SHOWN IN INCHES. SECONDARY UNITS SHOWN IN MILLIMETERS.  
THIRD ANGLE PROJECTION  
DEFAULT TOLERANCES:  
ANGLES: ± 1°  
1 PLACE .X: ± .100 [2.54]  
2 PLACE .XX: ± .010 [0.3]  
3 PLACE .XXX: ± .005 [0.13]

THE COMPONENT OR PRODUCT DESCRIBED IN THIS DOCUMENT MUST COMPLY WITH RoHS 3 EU (EUROPEAN UNION) DIRECTIVE 2015/863 AND EU REACH REGULATION (EC) 1907/2006.

THIS DOCUMENT IS SOLELY THE PROPERTY OF AQ-MATIC. REPRODUCTION, USE DISCLOSURE, OR TRANSMISSION OF THIS DOCUMENT OR DETAILS CONTAINED HEREIN, IN PART OR IN WHOLE, IS PROHIBITED WITHOUT THE WRITTEN CONSENT OF AQ-MATIC ENGINEERING. THIS DOCUMENT AND ANY COPIES SHALL BE RETURNED TO AQ-MATIC UPON WRITTEN REQUEST.

**AQMATIC**  
Valves & Controls

DESCRIPTION  
**SERIES 51 STAGER ASSEMBLY**

DWG. NO.	<b>1077770</b>	REV.	<b>D</b>
SIZE	<b>C</b>	SCALE	<b>3:4</b>
		SHEET 1 OF 2	

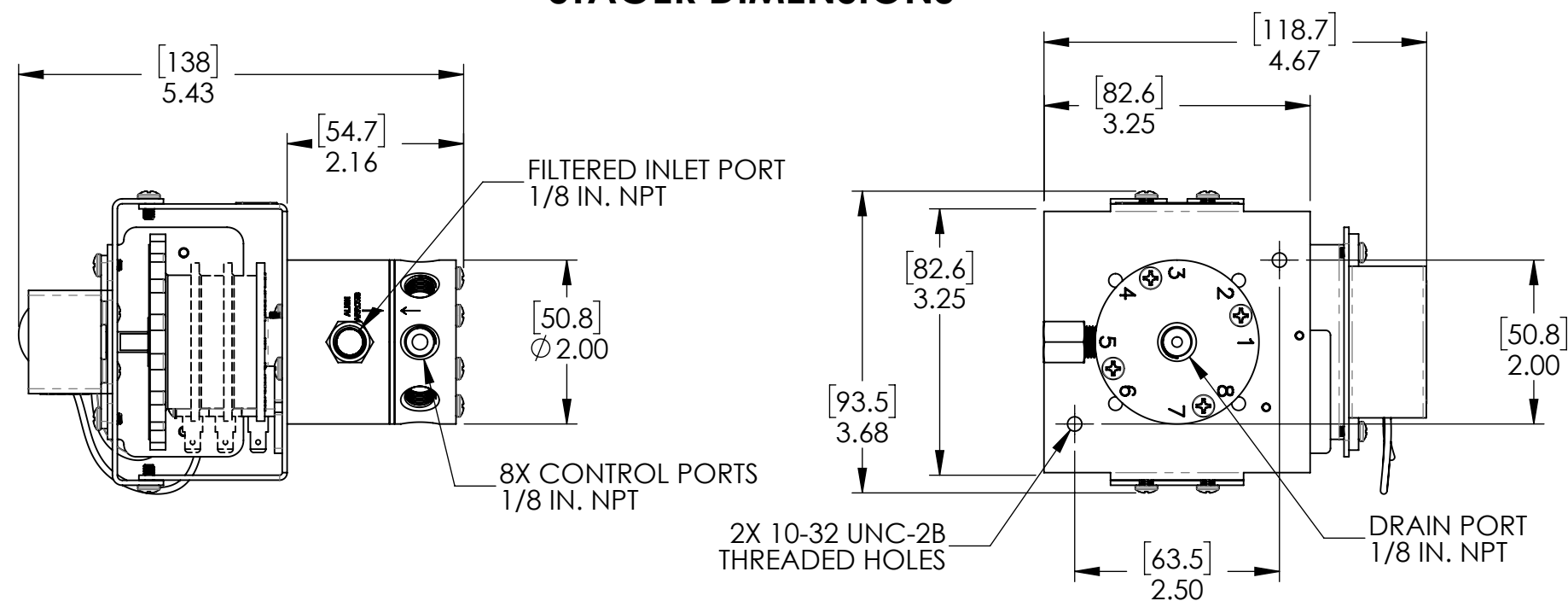
4

3

2

1

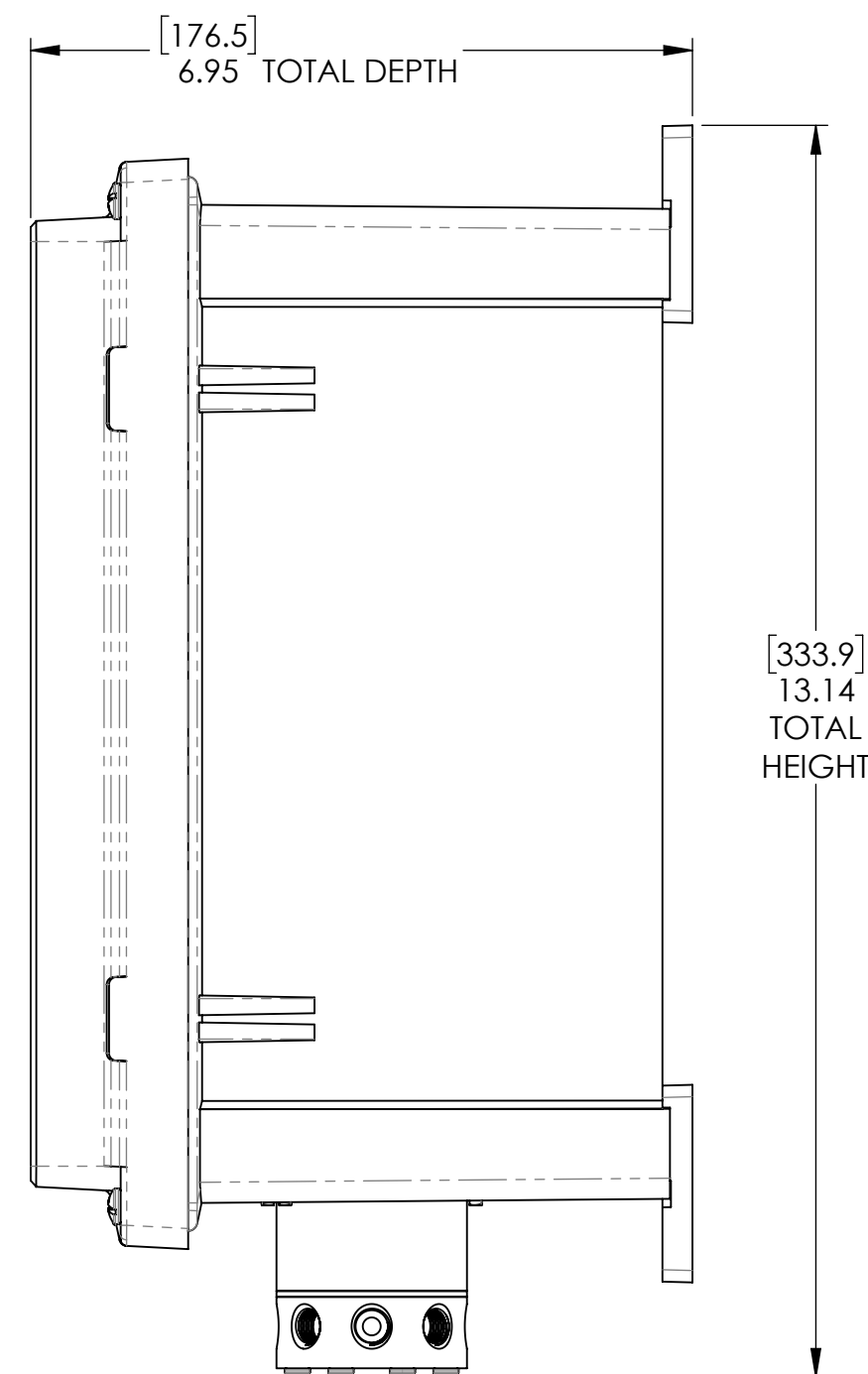
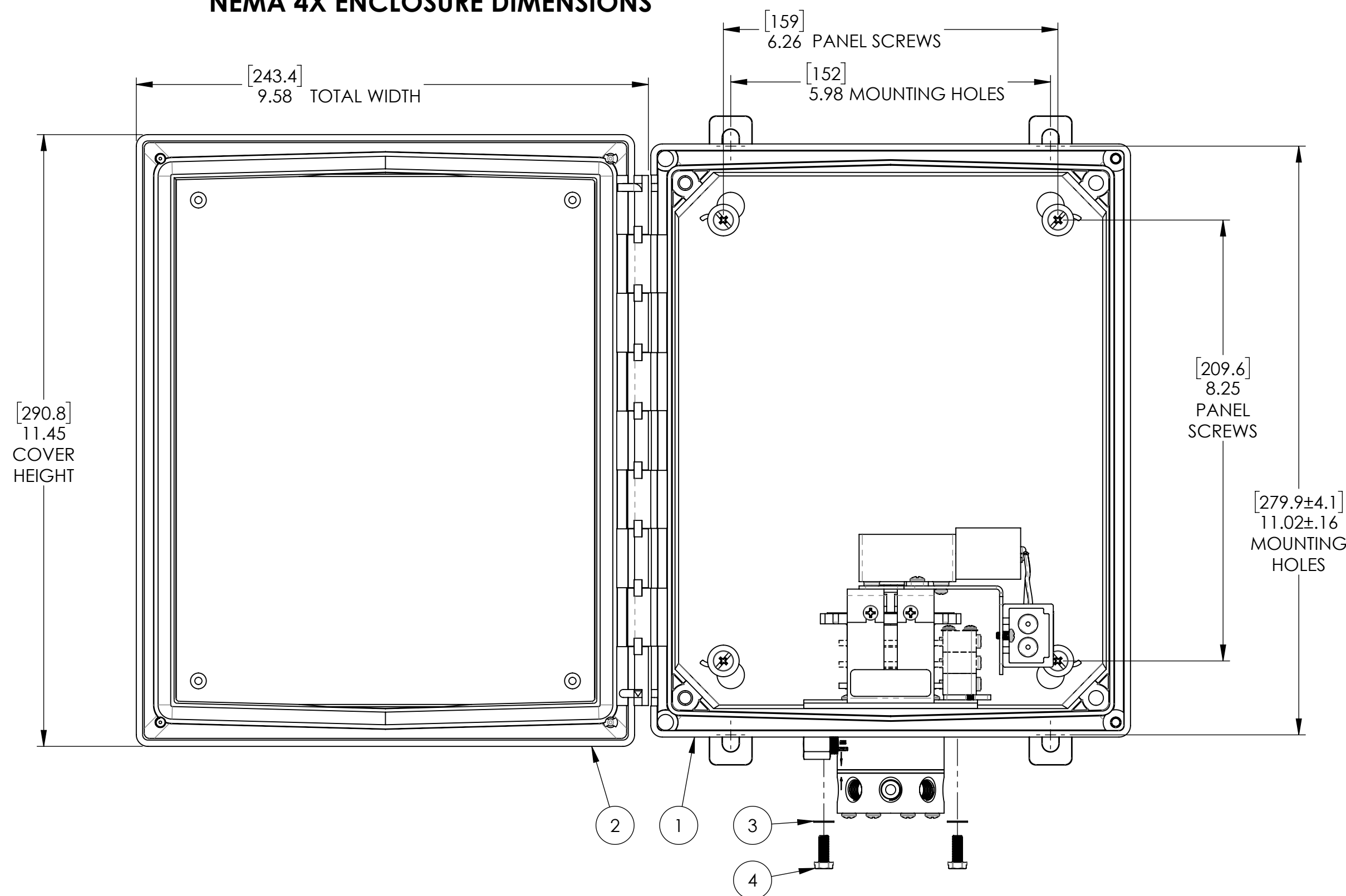
### STAGER DIMENSIONS



REVISIONS			
REV	DESCRIPTION	DATE	APPROVED
SEE SHEET 1 FOR REVISION HISTORY			

ITEM NO.	DESCRIPTION	PART NUMBER	MODEL	QTY.
1	ENCLOSURE, NEMA 4X, 10x8x6	23038		1
2	COVER, NEMA 4X, 10x8x6	23039		1
3	WASHER, LOCK, INTERNAL, #10, SS	1078992	WAS-0005	2
4	SCREW, HX HD, 10-32, X 1/2", SS	3014200		2

### NEMA 4X ENCLOSURE DIMENSIONS



SERIES NO.	PORTS VENTED IN POSITION								DESCRIPTION
	A	B	C	D	E	F	G	H	
51-06	1,2(SVC)	-	4(BW)	-	5,6,7(BR)	6,7(SR)	1,7(FR)	1,2,8(BR REF)	TIMED BR. & REFILL SOFTENER
51-07	1,2(SVC)	-	4(BW)	-	5,6,7(BR)	6,7(SR)	1,7(FR)	-	TIMED BRINE SOFTENER
51-09	1,3(SVC)	-	-	4(BW)	5,7(BR/SR)	-	1,7(FR)	1,8(REF)	TIMED REFILL SOFTENER
51-10	1,2,5,6(SVC)	-	5,6,7(BW1)	1,5,6,8(FR1)	-	-	1,2,3(BW2)	1,2,4,5(FR2)	2 TANK SEQ. FILTER
51-11	2,3(SVC)	-	1,4(DR)	-	4,6,7(AS)	4,7,8(BW)	-	1,2(FR)	FILTER WITH AIR SCOUR
51-12	1,8(SVC)	2(BW)	-	4,5(BR)	4,5(DSP)	5,6(REC)	4,8(FR)	-	BRINE RECYCLE SOFT.
51-86	1(BW)	2(BW)	3(BW)	4(BW)	5(BW)	6(BW)	7(SVC)	-	6 TANK SEQ. FILTER
51-87	1(BW)	2(BW)	3(BW)	4(BW)	5(BW)	6(BW)	7(BW)	8(SVC)	7 TANK SEQ FILTER

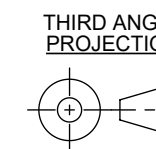
#### NOTES:

- PIPING SCHEMATICS AVAILABLE UPON REQUEST.
- ENCLOSURE MADE FROM UNFILLED POLYCARBONATE
- DIMENSIONS IN INCHES [MM].
- STAGERS SUPPLIED WITH NOTCHED CAM FOR PULSE OUTPUT TYPE TIMES.

INTERPRET DIMENSIONS AND TOLERANCES PER ASME Y14.5M-2018.

PRIMARY UNITS SHOWN IN INCHES.  
SECONDARY UNITS SHOWN IN MILLIMETERS.

DEFAULT TOLERANCES:  
ANGLES: ± 1°  
1 PLACE .X: ± .100 [2.54]  
2 PLACE .XX: ± .010 [0.3]  
3 PLACE .XXX: ± .005 [0.13]



THIS DOCUMENT IS SOLELY THE PROPERTY OF AQ-MATIC. REPRODUCTION, USE, DISCLOSURE, OR TRANSMISSION OF THIS DOCUMENT OR DETAILS CONTAINED HEREIN, IN PART OR IN WHOLE, IS PROHIBITED WITHOUT THE WRITTEN CONSENT OF AQ-MATIC ENGINEERING. THIS DOCUMENT AND ANY COPIES SHALL BE RETURNED TO AQ-MATIC UPON WRITTEN REQUEST.



DESCRIPTION	
<b>SERIES 51 STAGER ASSEMBLY</b>	
DWG NO. <b>1077770</b>	REV. <b>D</b>
SIZE <b>C</b>	SCALE <b>1:2</b> SHEET <b>2 OF 2</b>

4

3

2

1