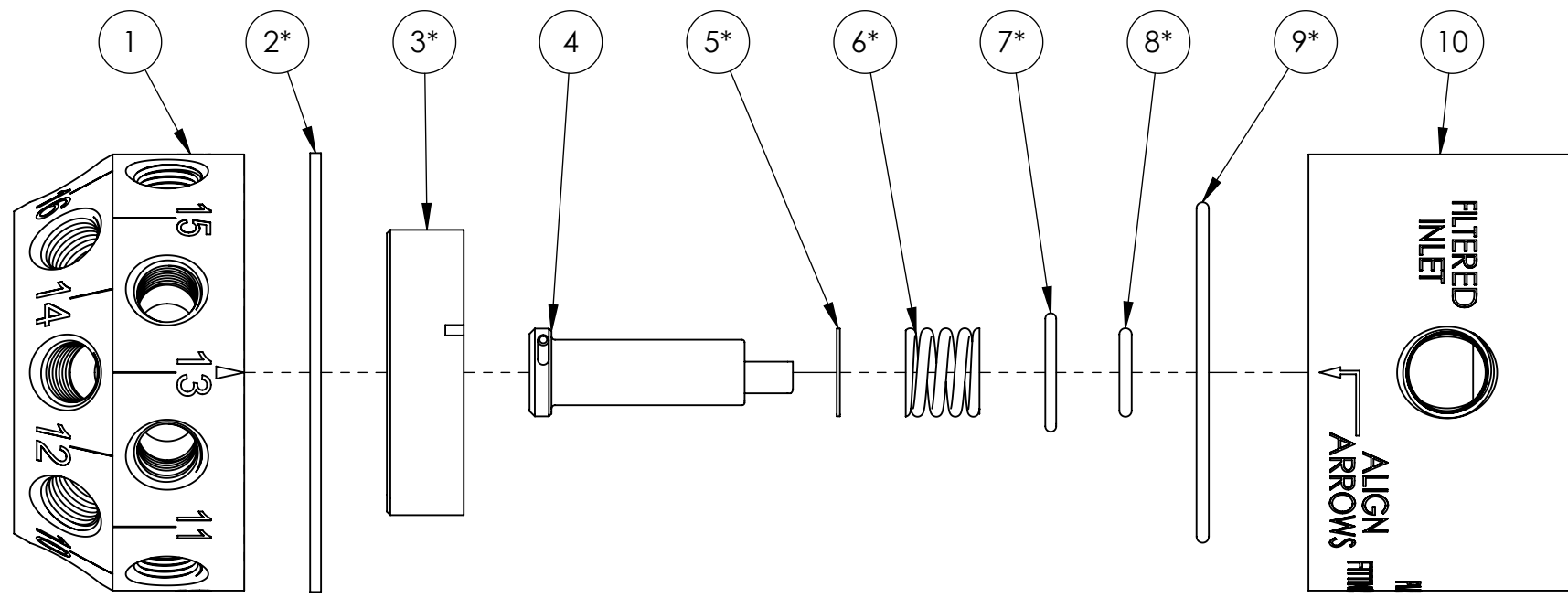
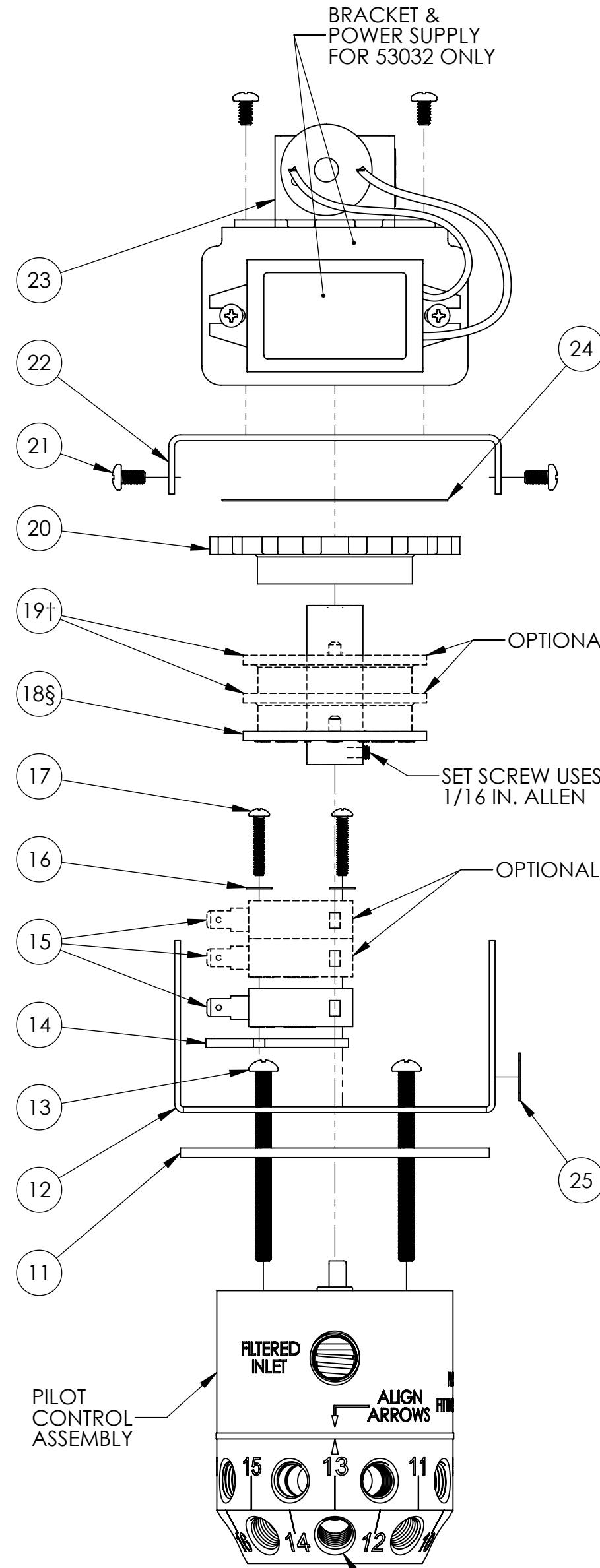


### PILOT CONTROL ASSEMBLY



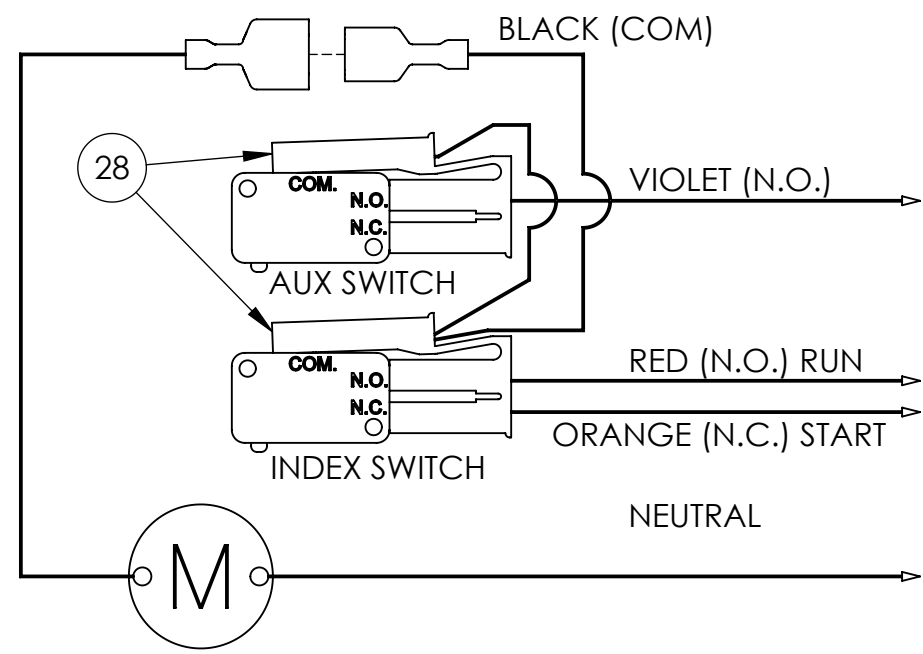
REVISIONS				
ECN	REV	DESCRIPTION	DATE	APPROVED
	B	NUMBER CONVERSION	12/20/2002	MSM
2474	C	REDRAWN IN AQ-MATIC FORMAT, MOTOR UPDATE, LABELS ADDED	11/14/2024	PMJ



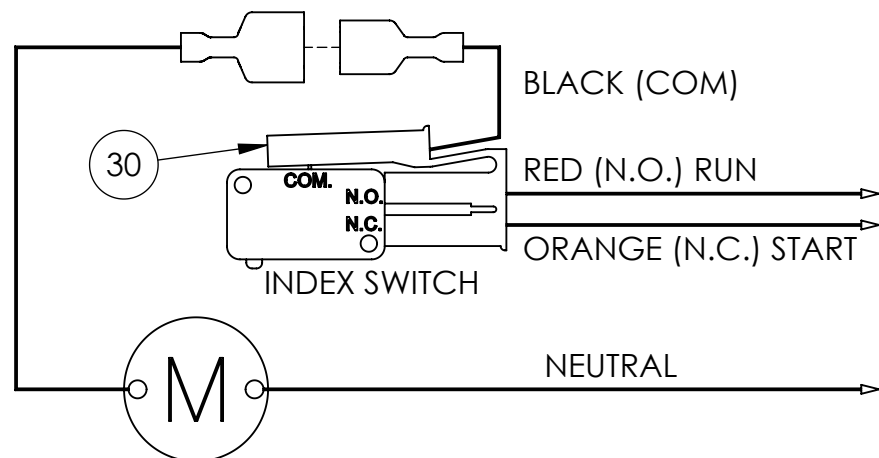
ITEM NO.	DESCRIPTION	PART NO.	MODEL	QTY.	
1	BACKPLATE,58B,ALPHA,PLS	PER PROGRAM		1	
2*	GASKET,BACKPLATE,58 & 59	1084170	58-KZ	1	
3*	STEMPLATE,58	PER PROGRAM		1	
4	STEM SHAFT ASSY,58	1070439		1	
5*	WASHER, .375" x .500" x .018"	1075395	58-AH	1	
6*	SPRING,COMPRESSION,58/59	1075424	58-S	1	
7*	INSERT	1075406	58-DA	1	
8*	O-RING, 2-012, NITRILE	1071668	ORB-012	1	
9*	O-RING, CUSTOM, BUNA	1075425	58-T	1	
10	BONNET,58,VC	1075404	58-B	1	
11	GASKET, STAGER MOUNT, 58	1075407		1	
12	PLATE,BOTTOM MOUNTING,STAGER	1070437		1	
13	SCREW,8-32 X 2 PHMS,PHLPS	1072378	SCS-0087	4	
14	SWITCH INSULATOR	1075455	58B019	1	
15	SWITCH,MICRO	1075499	58013	3	
16	LOCK WASHER (NO. 4)	1073593	WAS-0015	2	
17	PAN HD. MACH. SCREW 4-40 THREAD	1 SWITCH	1072369	SCS-0064	2
2 SWITCHES		1075757	SCS-0065		
3 SWITCHES		1072389	SCS-0151		
18§	INDEXING CAM & SET SCREW	PER PROGRAM		1	
19†	CAM, AUXILIARY	PER PROGRAM		2	
20	THUMB WHEEL, STAGER	1075454	58B018	1	
21	SCREW, 6-32 X 1/4", PHIL, PAN	1075746		6	
22	PLATE, MOTOR MOUNTING	1070436		1	
23	MOTOR ASSY	100-265 VAC	53032	1	
		12, 24 V	53030		
24	LABEL, DIAL, STGR, 2.375 X .875	PER PROGRAM		1	
25	LABEL,SERIAL NUMBER, 1.5"X.5"	42813U		1	
28	HARNES,STGR,CYCLE & HOMING	1075463	58B029	1	
29	HARNES,STGR,CYCLE & COMMON	1075464	58B030	1	
30	HARNES, STAGER, CYCLE ONLY	1075496	58010	1	
31	SWITCH WIRE ASSY,#1 AUX	1075501	58015	1	
32	SWITCH WIRE ASSY,#2 AUX	1075502	58016	1	

- NOTES:
- § - STAGER PROGRAM MUST BE SPECIFIED WHEN ORDERING THIS PART.
  - † - MUST SPECIFY IN WHICH POSITION(S) SWITCH OUTPUT(S) ARE REQUIRED.
  - \* - SUPPLIED AS A KIT ONLY.

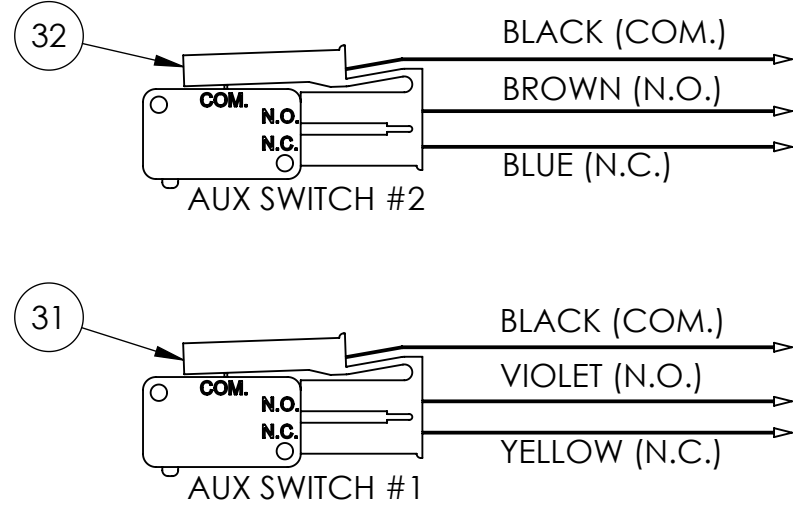
### CYCLE & HOMING SWITCHES



### CYCLE ONLY SWITCH



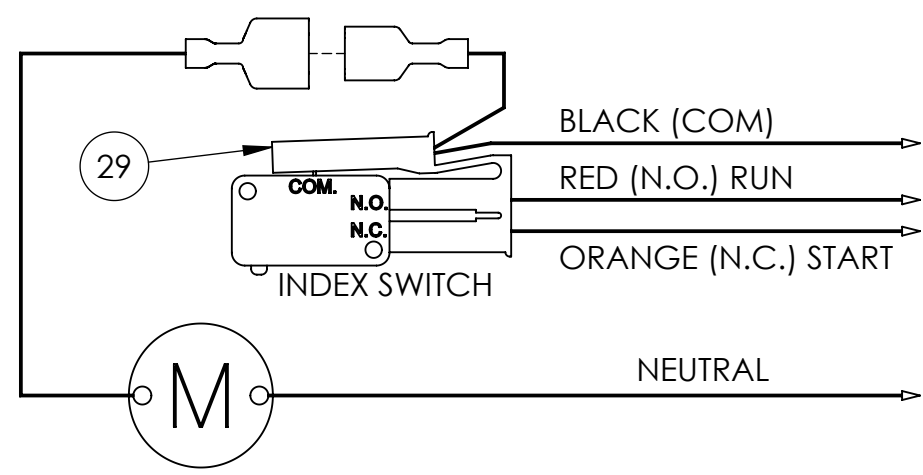
### OPTIONAL AUX SWITCHES MAXIMUM OF 2X



### SWITCH RATINGS

11A 1/3HP  
125, 250, 277 VAC  
1/2A 125 VDC  
4A 125 VAC L

### STANDARD CYCLE SWITCH



### INTERNAL PARTS KITS

STAGER PROGRAM	INTERNAL PARTS KITS STANDARD PROGRAMS	INTERNAL PARTS KITS INVERTED PROGRAMS		
58-00	1075411	58-IA-00		
58-01	1075412	58-IA-01		
58-02	1075413	58-IA-02		
58-03	1075414	58-IA-03		
58-07	1075415	58-IA-07		
58-10	1075416	58-IA-10		
58-TA	1075409	58-IA-TA	1075410	58-IA-TAI
58-TB	1081806	58-IA-TB		
58-SS	1075408	58-IA-SP	SPECIFY DWG. NO. WHEN ORDERING THESE PARTS	

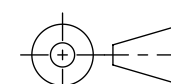
INTERNAL PARTS KITS INCLUDE ITEM NOS. 2, 3, 5, 6, 7, 8, AND 9 ALONG WITH A SMALL PACKET OF SILICON COMPOUND.

INTERPRET DIMENSIONS AND TOLERANCES PER ASME Y14.5M-2018.

PRIMARY UNITS SHOWN IN INCHES.  
SECONDARY UNITS SHOWN IN MILLIMETERS.

DEFAULT TOLERANCES:  
ANGLES: ± 1°  
1 PLACE .X: ± .100 [2.54]  
2 PLACE .XX: ± .010 [0.3]  
3 PLACE .XXX: ± .005 [0.13]

THIRD ANGLE PROJECTION



THIS COMPONENT OR PRODUCT DESCRIBED IN THIS DOCUMENT MUST COMPLY WITH RoHS 3 EU (EUROPEAN UNION) DIRECTIVE 2015/863 AND EU REACH REGULATION (EC) 1907/2006.  
THIS DOCUMENT IS SOLELY THE PROPERTY OF AQ-MATIC. REPRODUCTION, USE DISCLOSURE, OR TRANSMISSION OF THIS DOCUMENT OR DETAILS CONTAINED HEREIN, IN PART OR IN WHOLE, IS PROHIBITED WITHOUT THE WRITTEN CONSENT OF AQ-MATIC ENGINEERING. THIS DOCUMENT AND ANY COPIES SHALL BE RETURNED TO AQ-MATIC UPON WRITTEN REQUEST.



DESCRIPTION			
<b>SERIES 58 STAGER ASSEMBLY</b>			
DWG. NO.	<b>1077898</b>	REV.	<b>C</b>
SIZE	<b>C</b>	SCALE	<b>3:4</b>
		SHEET 1 OF 2	

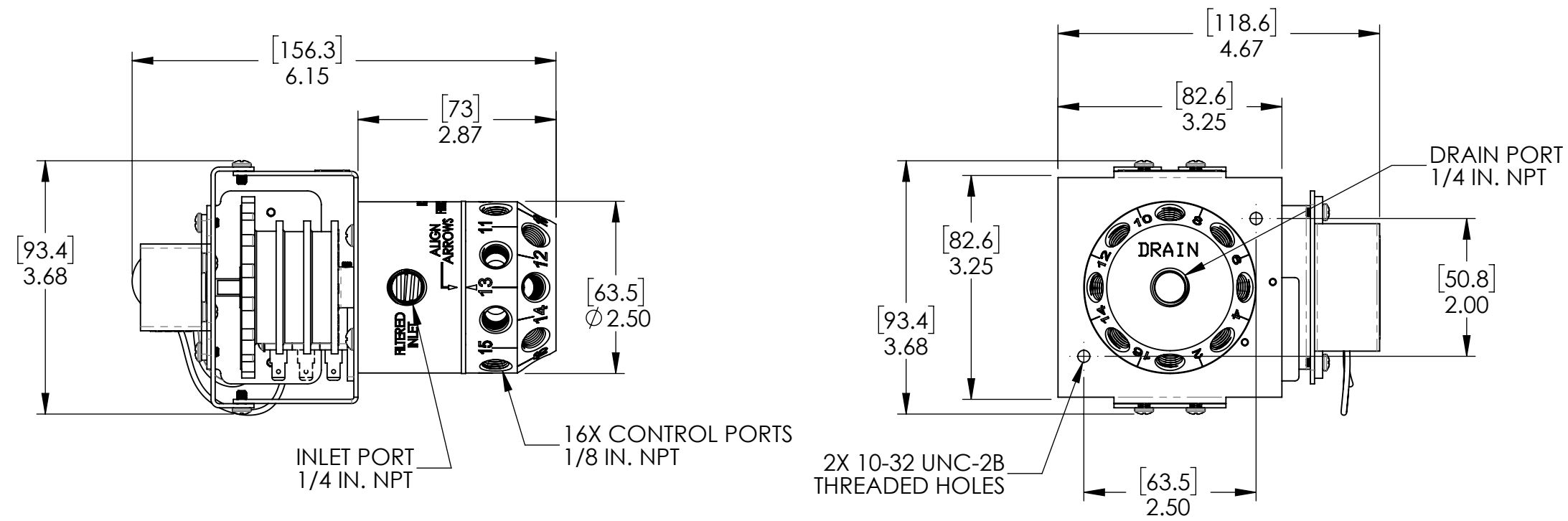
4

3

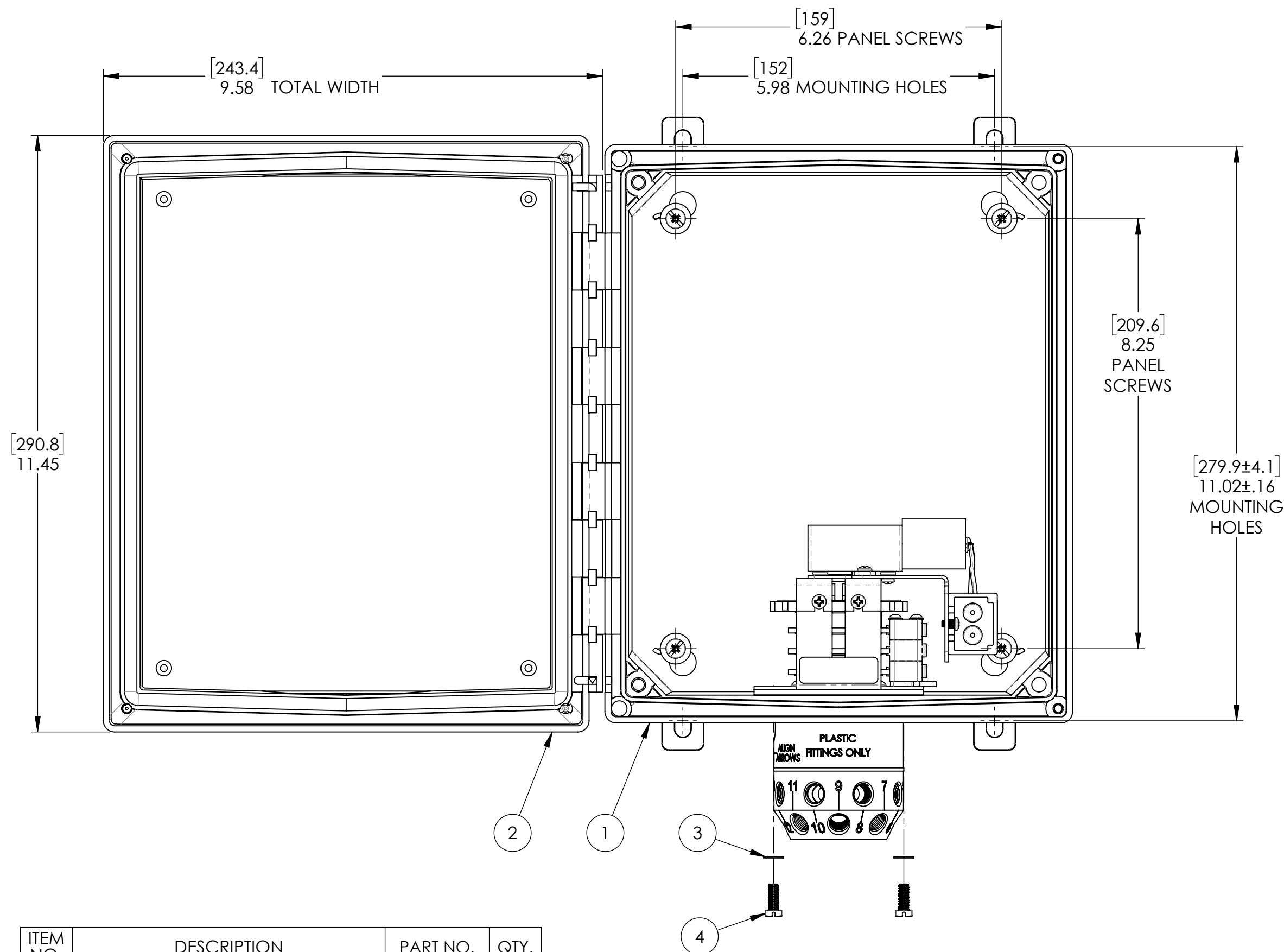
2

1

### STAGER DIMENSIONS



### NEMA 4X ENCLOSURE DIMENSIONS



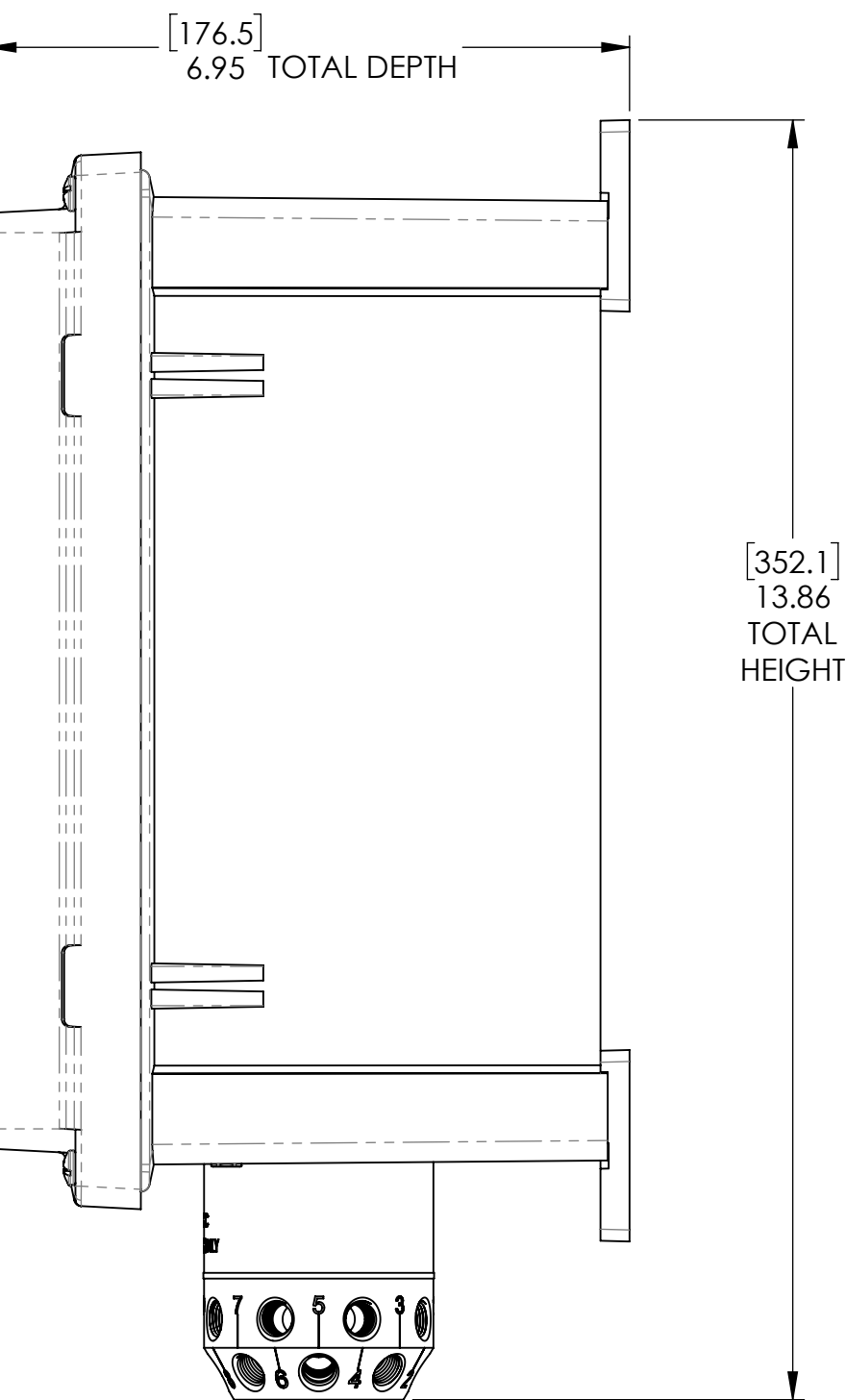
ITEM NO.	DESCRIPTION	PART NO.	QTY.
1	ENCLOSURE, NEMA 4X, 10x8x6	23038	1
2	COVER, NEMA 4X, 10x8x6	23039	1
3	WASHER, LOCK, INTERNAL, # 10, SS	1078992	1
4	SCREW, HX HD, 10-32, X 1/2", SS	3014200	1

#### NOTES:

1. PIPING SCHEMATICS AVAILABLE UPON REQUEST.
2. ENCLOSURE MADE FROM UNFILLED POLYCARBONATE.
3. DIMENSIONS GIVEN IN INCHES [MM].
4. STAGERS SUPPLIED WITH NOTCHED CAM FOR PULSE OUTPUT TYPE TIMERS.

REVISIONS				
ECN	REV	DESCRIPTION	DATE	APPROVED
SEE SHEET 1 FOR REVISION HISTORY				

SERIES NO.	DESCRIPTION
58-00	2 COLUMN DEIONIZER
58-01	FILTER (DOUBLE ACTING VALVES)
58-02	2 COLUMN DEIONIZER (CATION OUTLET VALVE)
58-03	3 TANK SEQUENTIAL FILTER
58-04	4 TANK SEQUENTIAL FILTER
58-07	MIXED BED DEIONIZER (SIMULTANIOUS REGEN)
58-10	MIXED BED DEIONIZER
58-TA	2 TANK ALTERNATOR
58-TB	2 TANK ALTERNATOR WITH TIMED BRINE
58-SS	CUSTOM PROGRAM

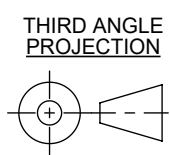


INTERPRET DIMENSIONS AND TOLERANCES PER ASME Y14.5M-2018.

PRIMARY UNITS SHOWN IN INCHES.  
SECONDARY UNITS SHOWN IN MILLIMETERS.

DEFAULT TOLERANCES:

- ANGLES: ± 1°
- 1 PLACE .X: ± .100 [2.54]
- 2 PLACE .XX: ± .010 [0.3]
- 3 PLACE .XXX: ± .005 [0.13]



THIS DOCUMENT IS SOLELY THE PROPERTY OF AQ-MATIC. REPRODUCTION, USE, DISCLOSURE, OR TRANSMISSION OF THIS DOCUMENT OR DETAILS CONTAINED HEREIN, IN PART OR IN WHOLE, IS PROHIBITED WITHOUT THE WRITTEN CONSENT OF AQ-MATIC ENGINEERING. THIS DOCUMENT AND ANY COPIES SHALL BE RETURNED TO AQ-MATIC UPON WRITTEN REQUEST.



DESCRIPTION  
**SERIES 58 STAGER ASSEMBLY**

DWG NO.	<b>1077898</b>	REV.	<b>C</b>
SIZE	<b>C</b>	SCALE	<b>1:2</b>
		SHEET 2 OF 2	

4

3

2

1