

A

D

C

B

A

D

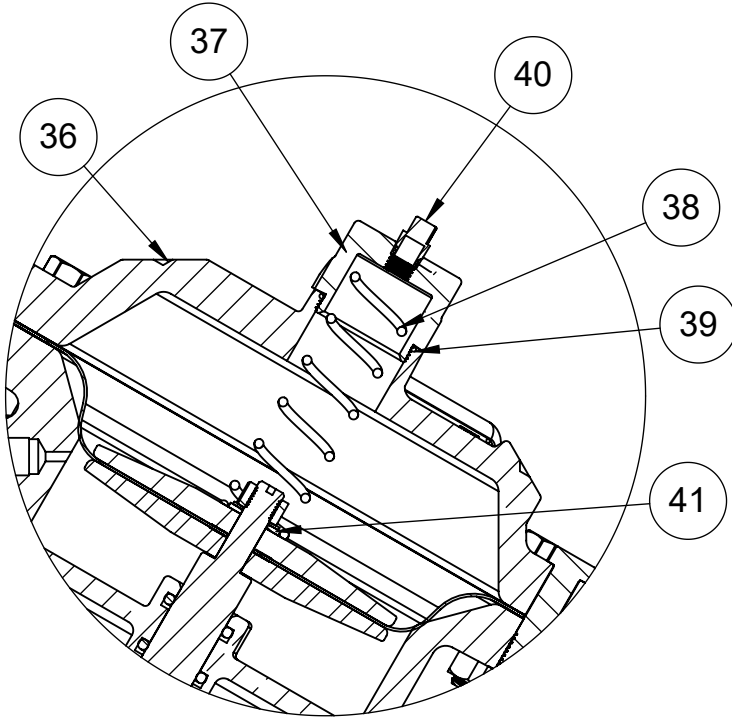
C

B

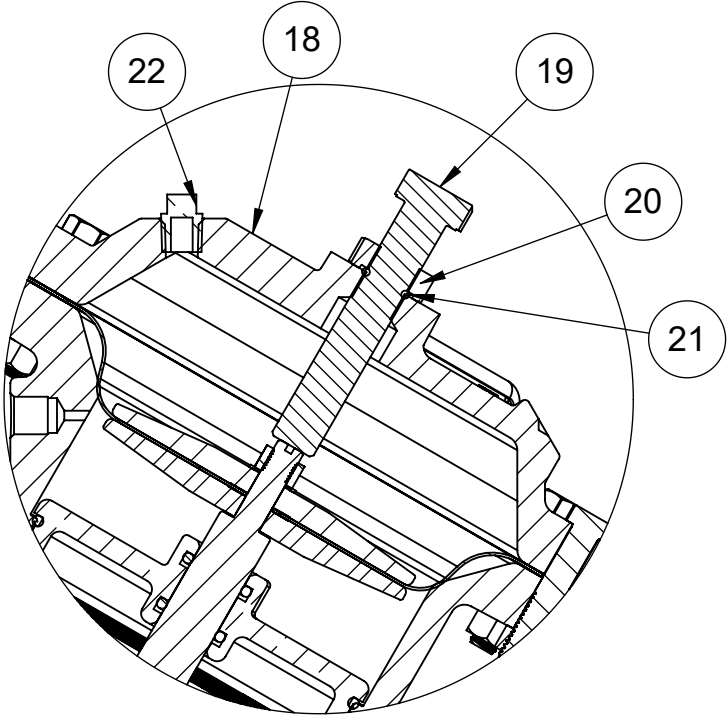
A

TORQUE TABLE		
ITEM #	DESCRIPTION	TORQUED TO (+/- 10%)
20	NUT, LIMIT STOP	140 IN/LBS
31	PI ROD GUIDE	140 IN/LBS
33	NUT, TOP, 428, PI	140 IN/LBS
37	NUT, SPRG RETAINER	140 IN/LBS

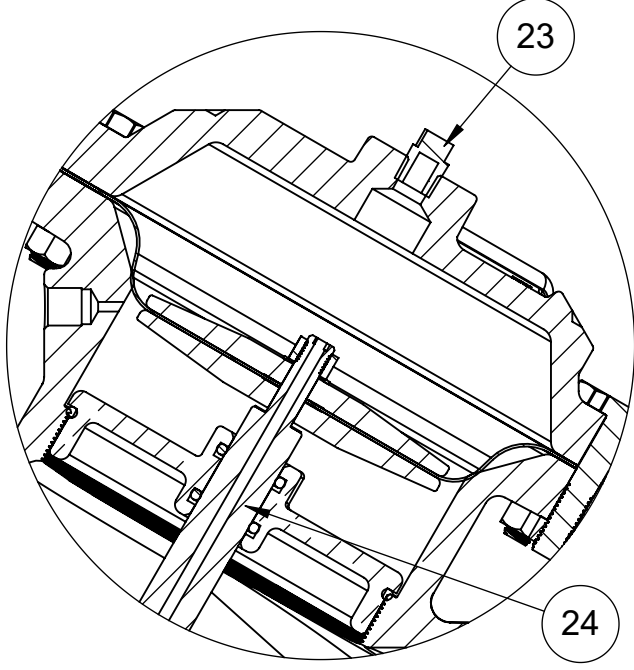
REVISIONS				
ECN	REV.	DESCRIPTION	DATE	APP'D
		SEE SHEET 1 FOR NOTES		



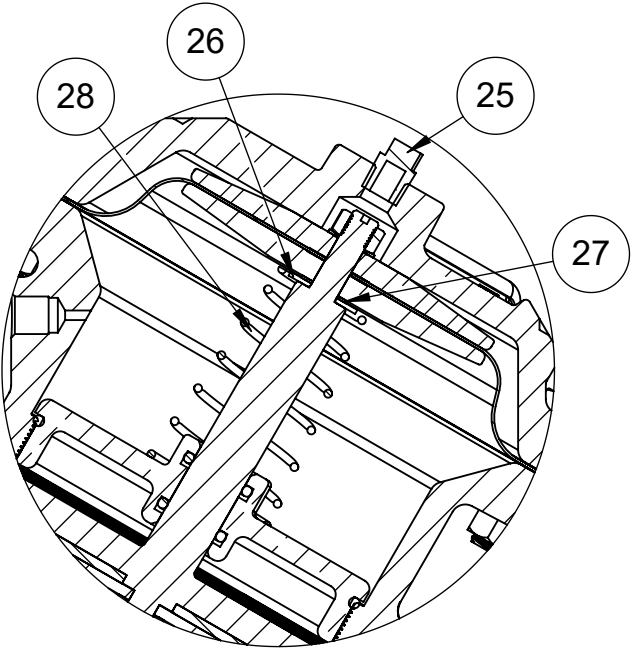
1073148 (V42K-3002-00000)  
SPRING ASSIST CLOSED



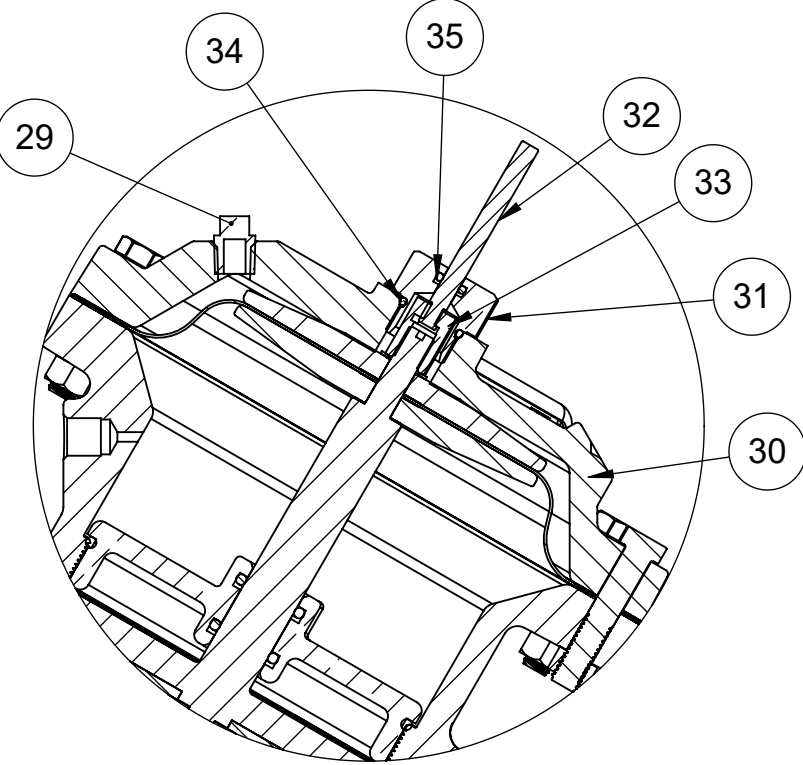
1073151 (V42K-3010-00000)  
LIMIT STOP



1073158 (V42K-3030-00000)  
NORMALLY CLOSED



1073146 (V42K-3001-00000)  
SPRING ASSIST OPEN



1073156 (V42K-3021-00000)  
POSITION INDICATOR

REPAIR PARTS KITS	
DESCRIPTION	PART NO.
INT. PARTS KIT (LIMITED STOP) CONSISTS OF STANDARD ITEM NO'S 19, 20, 21	1074583 (428-LS)
INT. PARTS KIT (NORM. CLOSED) CONSISTS OF STANDARD ITEM NO'S 5(2), 7, 9, 10(2), 24	1070134 (428-RG)
INT. PARTS KIT (SPRING ASSIST CLOSED) CONSISTS OF STANDARD ITEM NO'S 38, 39, 41	1074602 (428-SC)
INT. PARTS KIT (SPING ASSIST OPEN) CONSISTS OF STANDARD ITEM NO'S 26, 27, 28	1074604 (428-SO)
INT. PARTS KIT (POSTION INDICATOR)CONSISTS OF STANDARD ITEM NO'S 10(2), 31 THRU 35	1074591 (428-PI)

CONVERSION KITS	
DESCRIPTION	PART NO.
CONVERSION KIT (LIMITED STOP) CONSISTS OF STANDARD ITEM NO'S 18, 19, 20, 21	1074584 (428-LSC)
CONVERSION KIT (SPRING ASSIST CLOSED) CONSISTS OF STANDARD ITEM NO'S 36 THRU 41	1074603 (428-SCC)
CONVERSION KIT (SPRING ASSIST OPEN) CONSISTS OF STANDARD ITEM NO'S 26, 27, 28	1074606 ( 428-SOC)
CONVERSION KIT (POSITION INDICATOR) CONSISTS OF STANDARD ITEM NO'S 10(2), 29 THRU 35	1074592 (428-PIC)

NOTE:

1. SPRING ASSIST CLOSED MODEL CANNOT BE COMBINED WITH LIMITED STOP OR POSITION INDICATOR MODELS.
2. VALVES AVAILABLE WITH B.S.P. END CONNECTIONS.

SEE REVERSE SIDE FOR  
STANDARD NORMALLY OPEN MODEL

THIS DOCUMENT IS SOLELY THE PROPERTY OF AQ-MATIC REPRODUCTION, USE DISCLOSURE, OR TRANSMISSION OF THIS DOCUMENT OR DETAILS CONTAINED HEREIN, IN PART OR IN WHOLE, IS PROHIBITED WITHOUT THE WRITTEN CONSENT OF AQ-MATIC ENGINEERING. THIS DOCUMENT AND ANY COPIES SHALL BE RETURNED TO AQ-MATIC UPON WRITTEN REQUEST.

DO NOT SCALE DRAWING. DIMS. ARE IN INCHES [mm]  
INTERPRET DIMS AND TOLERANCES PER ASME Y14.5M -1994  
UNLESS OTHERWISE SPECIFIED:  
CORNER FILLETS R.005-.020 [127-.508]  
TOLERANCES:  
ANGLES: ± 1°  
1 PLACE .X: ± .100 [2.54]  
2 PLACE .XX: ± .010 [0.25]  
3 PLACE .XXX: ± .005 [0.13]

THE COMPONENT, PART, OR ASSEMBLY DESCRIBED IN THIS DOCUMENT MUST COMPLY WITH THE EU (EUROPEAN UNION) DIRECTIVE: RoHS DIRECTIVE 2011/65/EC.

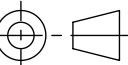
THIRD ANGLE PROJECTION

APPROVALS

DRAWN

CHECKED BY

APPROVED



DATE

10/27/20



CATALOG SHEET, 428  
DIAPHRAGM VALVE STANDARD MODEL

SIZE C DWG NO. 1077618 REV. U

SCALE 1:5 SOLIDWORKS FORMAT SHEET 2 OF 2