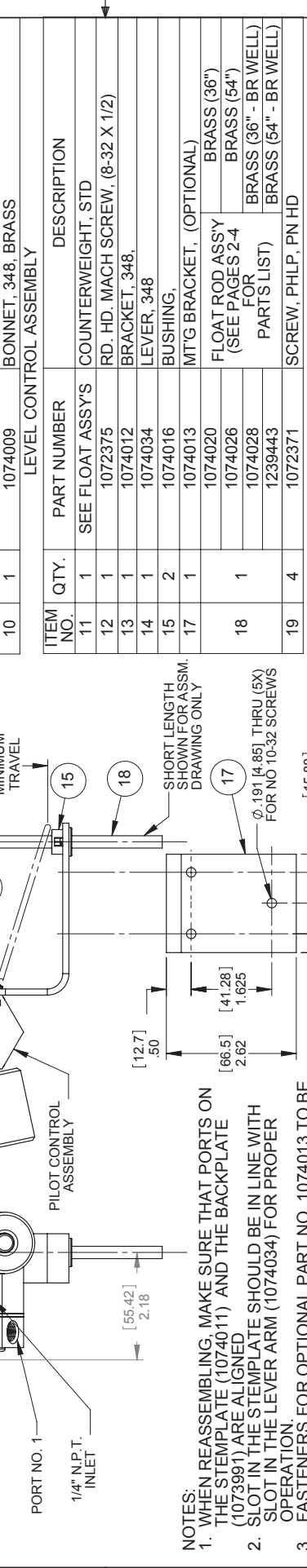
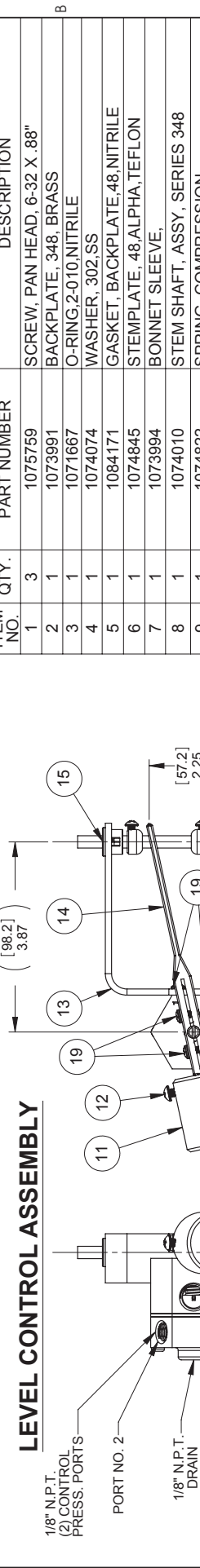


2 3 4

REPAIR PARTS KITS		DESCRIPTION	PART NO.
PILOT CONTROL REPAIR PARTS INCLUDES ITEM NO. 3 THRU 9			1074019 (348-IAB)
FLOAT UP		PORT 1 PRESSURED	PORT 2 VENTED
FLOAT DOWN		PORT 1 VENTED	PORT 2 PRESSURED

ZONE	ECN	REV.	DESCRIPTION	DATE	APP'D
	100843	E	REDRAWN IN SOLIDWORKS - WAS: DWG #1078194 (FORM # IS NOW THE DWG NUMBER)	7-3-12	TJM
	103972	F	1-REVID: 1074043-2-REVID: 1074028-3-REVID: 1074026-4-REVID: 1074019-5-UPDATED TITLE BLOCK	7-3-12	TJM
	104611	G	1-REVID: 1074045-2-REVID: 1074028-3-REVID: 1074026-4-REVID: 1074019-5-UPDATED TITLE BLOCK	12MAY15	TJM
	1001	H	AQ Matic update & verified part numbers	27JAN17	MGS



ITEM NO.	QTY.	PART NUMBER	DESCRIPTION
11	1	SEE FLOAT ASSYS	COUNTERWEIGHT, STD
12	1	1072375	RD. HD. MACH SCREW, (8-32 X 1/2)
13	1	1074012	BRACKET, 348,
14	1	1074034	LEVER, 348
15	2	1074016	BUSHING,
17	1	1074013	MTG BRACKET, (OPTIONAL)
18	1	1074020	FLOAT ROD ASSY (SEE PAGES 2-4 PARTS LIST)
		1074026	BRASS (36")
		1074028	BRASS (54")
19	4	1072371	SCREW, PHLP, PN HD

LEVEL CONTROL ASSEMBLY

PILOT CONTROL ASSEMBLY - (1073992)

NOTES:

- WHEN REASSEMBLING, MAKE SURE THAT PORTS ON THE STEMPLATE (1074011) AND THE BACKPLATE (1073991) ARE ALIGNED.
- SLOT IN THE STEMPLATE SHOULD BE IN LINE WITH SLOT IN THE LEVER ARM (1074034) FOR PROPER OPERATION.
- FASTENERS FOR OPTIONAL PART NO. 1074013 TO BE FURNISHED BY CUSTOMER.
- 2.25" [57MM] CHANGE IN LEVEL REQUIRED BEFORE PRESSURE/VENT SIGNALS ARE REVERSED ON CONTROL PORTS.

FOR FLOAT ROD ASSEMBLY OPTIONS, SEE ATTACHED SHEETS

SEIRES 348 LEVEL CONTROL FLOAT OPERATED VALVE

COMPONENTS (ASSEMBLES) TO BE COMPLIANT AND COMPATIBLE WITH EUROPEAN UNION DIRECTIVE 2011/65/EEC (ROHS2) & REGULATION (EU) 1927/2006 (REACH) REQUIREMENTS

THIS DOCUMENT IS SOLELY THE PROPERTY OF AQ Matic VALVE & CONTROLS COMPANY INC. REPRODUCTION OR DISCLOSURE, OR TRANSMISSION OF THIS DOCUMENT OR DETAILS CONTAINED HEREIN, IN PART OR IN WHOLE, IS STRICTLY PROHIBITED. IF YOU ARE AN AQ Matic ENGINEER, THIS DOCUMENT AND ANY COPIES SHALL BE RETURNED TO AQ Matic UPON REQUEST.

DO NOT SCALE DRAWING DIMS. ARE IN INCHES (mm) UNLESS OTHERWISE SPECIFIED: INTERPRET DIMS AND TOLERANCES PER ASME Y14.5M -2009

ALL FINISHED MACHINED SURFACES 125 $\sqrt{\text{R}}$ OR BETTER.

ANGLES: $\pm 1^\circ$

1 PLACE .X; ± 0.15 [0.38]
 2 PLACE .XX; ± 0.1 [0.3]
 3 PLACE .XXX; ± 0.05 [0.13]

AQ Matic Valve & Controls Company Inc.

FLOAT OPERATED LEVEL CONTROL, V420 FLOAT ROD ASSEMBLIES

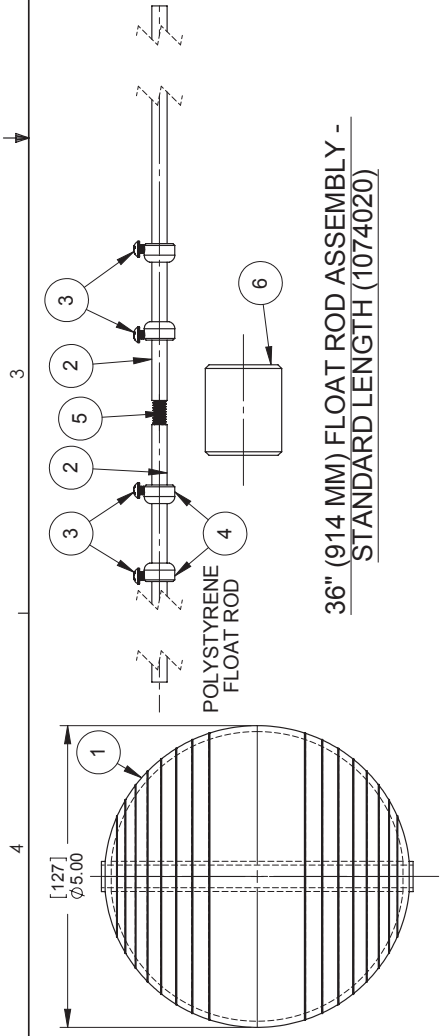
REV H

SIZE B DWG NO. BR1078193

SCALE 1:2 SHEET 1 OF 3

REVISIONS					
ZONE	ECN	REV.	DESCRIPTION	DATE	APP'D
			SEE SHEET 1 FOR LIST OF CHANGES.		

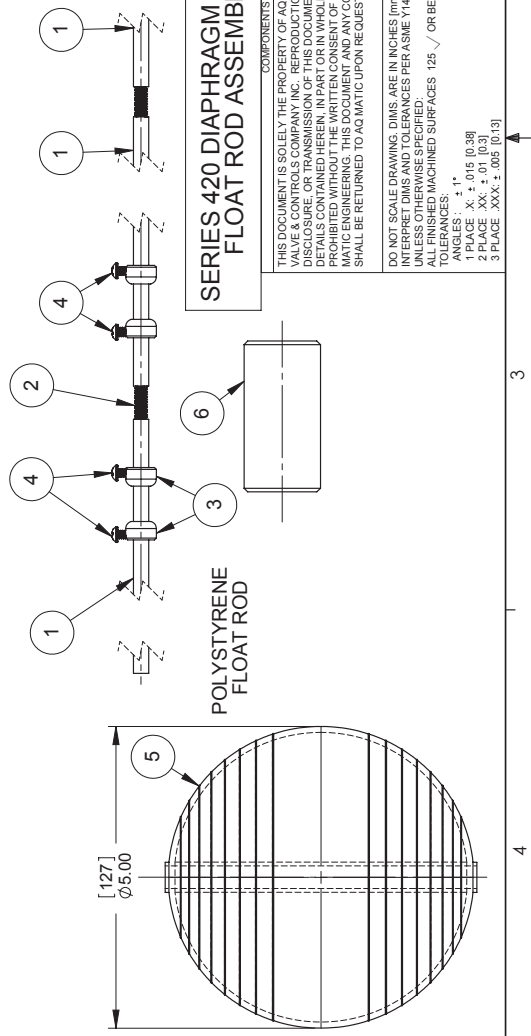
STANDARD 36" FLOAT ROD ASSEMBLY 1074020			
ITEM NO.	QTY.	PART NUMBER	DESCRIPTION
1	1	1073996	FLOAT, SAND, 5"
2	2	1074023	TUBE, FLOAT ROD, BRASS 18" LG
3	4	1072370	RD. HD. MACH. SCREW, (6-32 X 1/4)
4	4	1074017	CENTERING COLLAR, BRASS
5	1	1074022	STUD, THRD. #12-24 UNC-2A, SS
6	1	1074014	COUNTERWEIGHT, STD



36" (914 MM) FLOAT ROD ASSEMBLY -
STANDARD LENGTH (1074020)

G3

OPTIONAL 54" FLOAT ROD ASSEMBLY 1074026			
ITEM NO.	QTY.	PART NUMBER	DESCRIPTION
1	3	1074023	TUBE, FLOAT ROD, BRASS 18" LG
2	2	1074022	STUD, THRD. #12-24 UNC-2A, SS
3	4	1074017	CENTERING COLLAR, BRASS
4	4	1072370	RD. HD. MACH. SCREW, (6-32 X 1/4)
5	1	1073996	FLOAT, SAND, 5"
6	1	1074015	COUNTERWEIGHT, SPECIAL



SERIES 420 DIAPHRAGM VALVES
FLOAT ROD ASSEMBLIES

<p>COMPONENTS / ASSEMBLIES TO BE COMPLIANT AND COMPATIBLE WITH EUROPEAN UNION DIRECTIVE 2017/745/EEC (MPS) & REGULATION (EC) 1907/2006 (REACH) REQUIREMENTS</p>		<p>THIS DOCUMENT IS SOLELY THE PROPERTY OF AQ Matic VALVE & CONTROLS COMPANY INC. REPRODUCTION, USE, DISCLOSURE, OR TRANSMISSION OF THIS DOCUMENT OR DETAILS CONTAINED HEREIN, IN PART OR IN WHOLE, IS STRICTLY PROHIBITED WITHOUT THE WRITTEN PERMISSION OF AQ Matic ENGINEERING. THIS DOCUMENT AND ANY COPIES SHALL BE RETURNED TO AQ Matic UPON REQUEST.</p>	
THIRD ANGLE PROJECTION	DATE	<p>DO NOT SCALE DRAWING. DIMS. ARE IN INCHES (mm) UNLESS OTHERWISE SPECIFIED: 1 PLACE .X. ± .015 (0.38) 2 PLACE .XX. ± .01 (0.3) 3 PLACE .XXX. ± .005 (0.13) ANGLES: ± 1°</p>	
APPROVALS	APPROVED	<p>INTERPRET DIMS AND TOLERANCES PER ASME Y14.5M -2009 UNLESS OTHERWISE SPECIFIED: TOLERANCES: MACHINED SURFACES: 125 √ OR BETTER.</p>	
DRAWN	CHECKED	<p>SCALE: 1:2</p>	
NE		<p>TITLE: FLOAT OPERATED LEVEL CONTROL, V420 FLOAT ROD ASSEMBLIES</p>	
		SIZE	REV
		B	H
		DWG NO.	
		BR1078193	
		SHEET 2 OF 3	



FLOAT OPERATED LEVEL CONTROL,
V420 FLOAT ROD ASSEMBLIES

SIZE B
DWG NO. BR1078193
SCALE 1:2
REV H
SHEET 2 OF 3

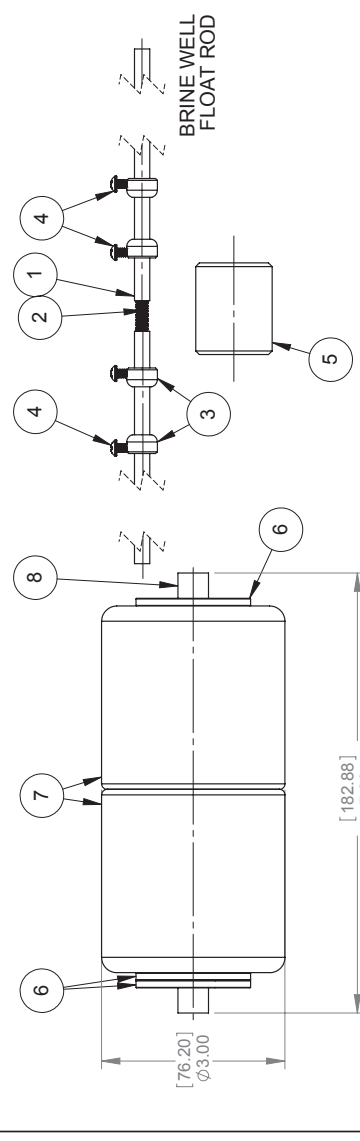
REVISIONS					
ZONE	ECN	REV.	DESCRIPTION	DATE	APP'D
			SEE SHEET 1 FOR LIST OF CHANGES.		

OPTIONAL 36" BRINE WELL FLOAT ROD ASSEMBLY 1074028

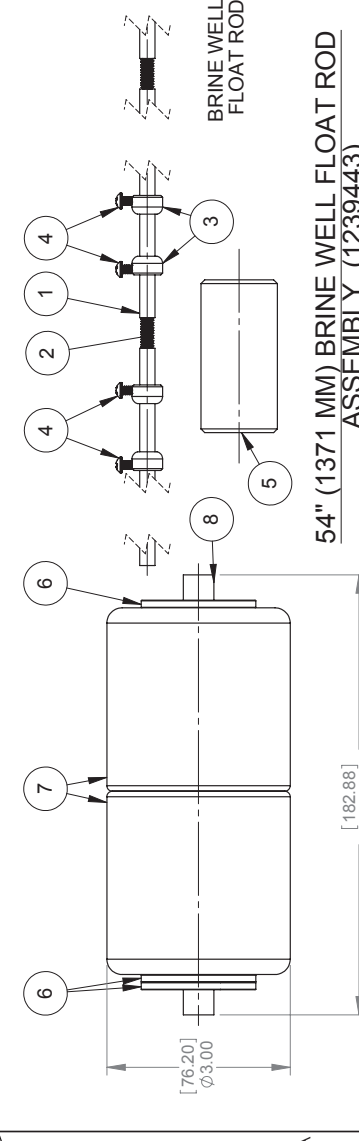
ITEM NO.	QTY.	PART NUMBER	DESCRIPTION
1	2	1074023	TUBE, FLOAT ROD, BRASS 18" LG
2	1	1074022	STUD, THRD, #12-24 UNC-2A, SS
3	4	1074017	CENTERING COLLAR, BRASS
4	4	1072370	RD. HD. MACH. SCREW, (6-32 X 1/4)
5	1	1074014	COUNTERWEIGHT, STD
6	3	1074032	WIEGHT, FLOAT, BRASS
7	2	1074033	FLOAT, BRINE WELL
8	1	1074036	TUBE, .50, BRASS

OPTIONAL 54" BRINE WELL FLOAT ROD ASSEMBLY 1239443

ITEM NO.	QTY.	PART NUMBER	DESCRIPTION
1	3	1074023	TUBE, FLOAT ROD, BRASS 18" LG
2	2	1074022	STUD, THRD, #12-24 UNC-2A, SS
3	4	1074017	CENTERING COLLAR, BRASS
4	4	1072370	RD. HD. MACH. SCREW, (6-32 X 1/4)
5	1	1074015	COUNTERWEIGHT, SPECIAL
6	3	1074032	WIEGHT, FLOAT, BRASS
7	2	1074033	FLOAT, BRINE WELL
8	1	1074036	TUBE, .50, BRASS



36" (914 MM) BRINE WELL FLOAT ROD ASSEMBLY - STANDARD LENGTH (1074028)



54" (1371 MM) BRINE WELL FLOAT ROD ASSEMBLY (1239443)

SERIES 420 DIAPHRAGM VALVES FLOAT ROD ASSEMBLIES

		AQ Matic Valve & Controls Company Inc.	
APPROVALS	DATE	TITLE	REV
DRAWN NE	07-02-12	FLOAT OPERATED LEVEL CONTROL, V420 FLOAT ROD ASSEMBLIES	H
APPROVED		SIZE B	DWG NO. BR1078193
CHECKED		SCALE 1:2	SHEET 3 OF 3

THIS DOCUMENT IS SOLELY THE PROPERTY OF AQ Matic VALVE & CONTROLS COMPANY, INC. REPRODUCTION OR DISCLOSURE OR TRANSMISSION OF THIS DOCUMENT OR DETAILS CONTAINED HEREIN, IN PART OR IN WHOLE, IS PROHIBITED WITHOUT THE WRITTEN CONSENT OF AQ Matic. RETURNED TO AQ Matic UPON REQUEST.

COMPONENTS ASSEMBLED TO BE COMPLIANT AND COMPATIBLE WITH EUROPEAN UNION DIRECTIVE 2011/65/EC (ROHS2) & REGULATION (EU) 1907/2006 (REACH) REQUIREMENTS

DO NOT SCALE DRAWING. DIMS. ARE IN INCHES (mm) UNLESS OTHERWISE SPECIFIED. INTERPRET DIMS AND TOLERANCES PER ASME Y14.5M-2009 UNLESS OTHERWISE SPECIFIED. ALL FINISHED MACHINED SURFACES 125 $\sqrt{\text{R}}$ OR BETTER. TOLERANCES: 1 PLACE .X: ± .015 (0.38) 2 PLACE .XX: ± .01 (0.3) 3 PLACE .XXX: ± .005 (0.13)