

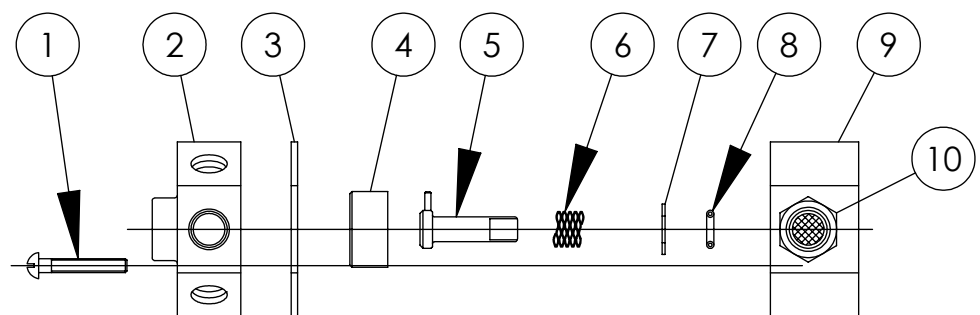
4

3

2

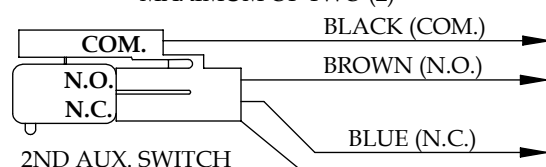
1

## PILOT CONTROL ASSEMBLY

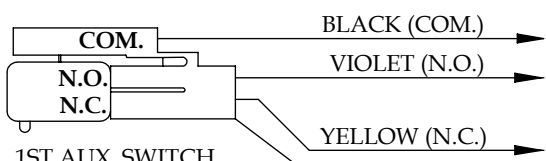


## OPTIONAL AUX. SWITCHES

MAXIMUM OF TWO (2)



2ND AUX. SWITCH

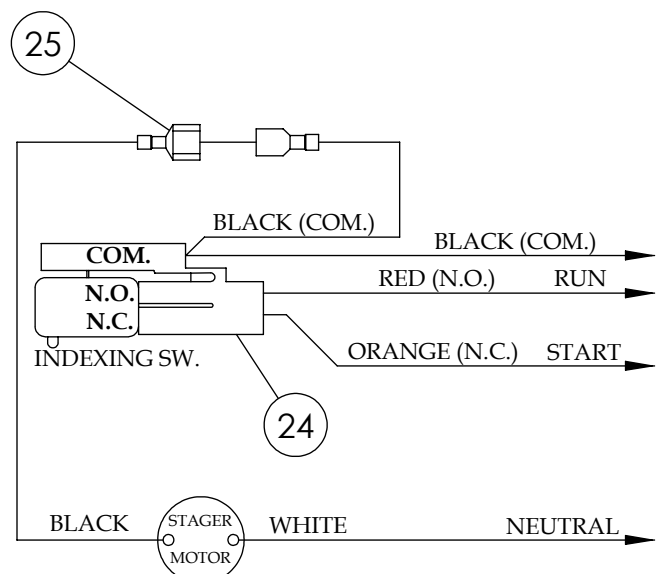


1ST AUX. SWITCH

## SWITCH RATINGS

11A 1/3HP  
125, 250, 277 VAC  
1/2A 125 VDC  
1/4A 250 VDC  
4A 125 VAC L

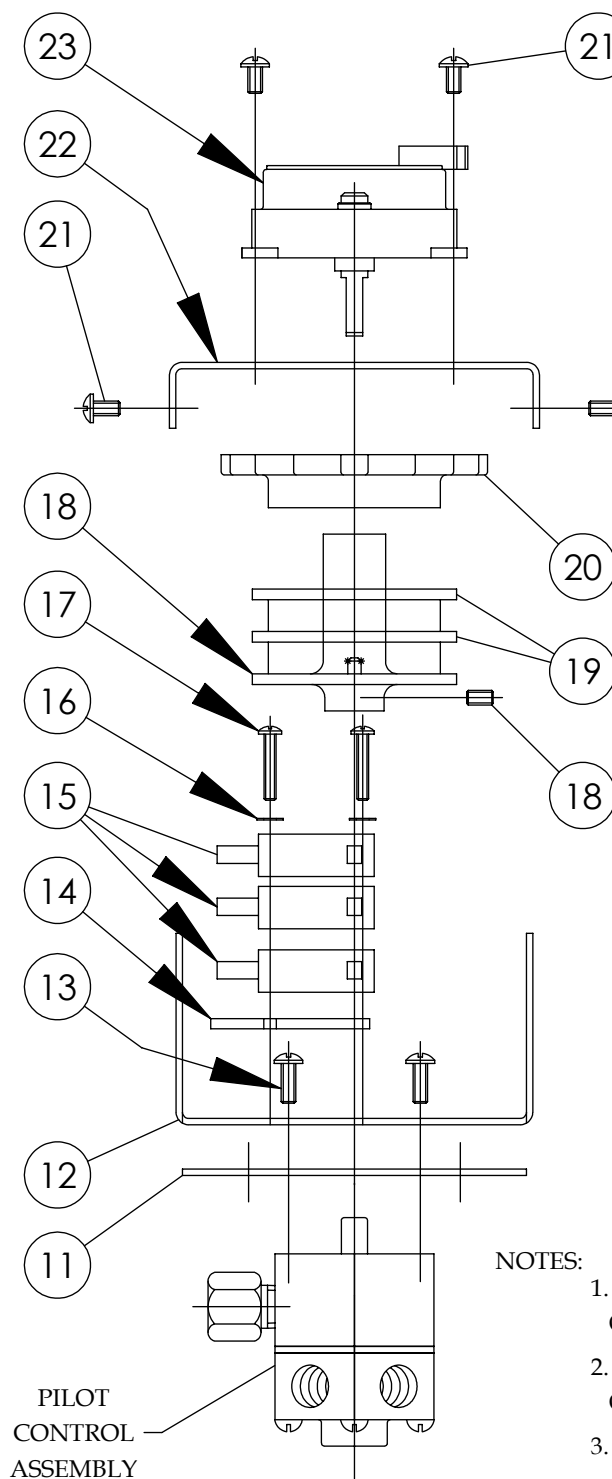
## STANDARD WIRING



## INTERNAL PARTS KITS

STAGER PROGRAM	INTERNAL PARTS KITS STD. PROGRAMS	INTERNAL PARTS KITS INVERTED PROGRAMS
48-00		
48-01		
48-03		
48-04	1074817 (48-IAB)	1077585 (48-IABI)
48-11		
48-12		
48-TA		
48-83		
48-84	1081593 (48-IA-83)	1081594 (48-IA-83I)
48-85		
48-TB	1077584 (48-IA-TB)	
48-SP	1084816 (48-IA-SP)	SPECIFY DWG. NO. WHEN ORDERING THESE PARTS

\* INTERNAL PARTS KITS INCLUDE ITEM NOS. 3, 4, 6, 7 & 8  
ALONG WITH A SMALL PACKET OF SILICON COMPOUND



## NOTES:

1. STAGER PROGRAM MUST BE SPECIFIED WHEN ORDERING THIS PART.
2. MUST SPECIFY IN WHICH POSITION(S) SWITCH OUTPUT(S) ARE REQUIRED.
3. SUPPLIED AS A KIT ONLY.

NO.	DESCRIPTION	PART NO.	QTY.	
1	RD HD. MACH. SCR. (6-32 X 7/8")	1075759 (SCS-0075)	3	
2	BACKPLATE	PER PROGRAM	1	
3	GASKET (SEE NOTE 3)	1084171	1	
4	STEMPLATE (SEE NOTE 3)	PER PROGRAM	1	
5	STEMSHAFT	1070448	1	
6	SPRING (SEE NOTE 3)	1076234	1	
7	WASHER (SEE NOTE 3)	1074074 (41-F)	1	
8	O-RING (SEE NOTE 3)	1071667 (ORB-010)	1	
9	BONNET	1074793 (48-B)	1	
10	FILTERED INLET (1/8" N.P.T.)	1074825 (48-Q)	1	
11	MOUNTING PLATE GASKET	1075737	1	
12	BOTTOM MOUNTING BRACKET	1070437	1	
13	PAN HD. MACH. SCR. (6-32 X 3/8")	1072371 (SCS-0070)	4	
14	INSULATOR	1075455 (58B019)	1	
15	SWITCH	1075499 (58013)	1-3	
16	LOCKWASHER (NO. 4)	1073593 (WAS-0015)	2	
17	PAN HD. MACH. SCREW (4-40 THREAD)	1 SWITCH	1072369 (SCS-0064)	2
		2 SWITCHES	1075757 (SCS-0065)	
		3 SWITCHES	1072389 (SCS-0151)	
18	48-00 INDEXING CAM 48-01 INDEXING CAM 48-03 INDEXING CAM 48-TA INDEXING CAM ALL OTHERS (SEE NOTE 1) *CAMs INCLUDE 6-32 SET SCREW	1076245	1	
		1076244		
		1076246		
		1077932		
		1076243		
19	AUXILIARY CAM (SEE NOTE 2)	1075451 (58B017)	0-2	
20	THUMB WHEEL	1075454 (58B018)	1	
21	TAPTITE SCREW (6-32 X 1/4")	1075746	6	
22	MOTOR MOUNTING BRACKET	1070436	1	
23	MOTOR (4 WATTS MAX.)	115VAC 60HZ	1075748	1
		230VAC 50/60HZ	1075749	
		24VAC 50/60HZ	1075750	
		12VAC 50/60HZ	1075753	
24	WIRE HARNESS (STANDARD)	1075464 (58B030)	1	
25	MALE CONNECTOR	1075498 (58012)	1	
26	WIRE HARNESS (1ST AUX. SWITCH)	1075501 (58015)	1	
27	WIRE HARNESS (2ND AUX. SWITCH)	1075502 (58016)	1	

PILOT CONTROL ASSEMBLY

THE COMPONENT, PART, OR ASSEMBLY DESCRIBED IN THIS DOCUMENT MUST COMPLY WITH THE EU (EUROPEAN UNION) DIRECTIVE: RoHS DIRECTIVE 2011/65/EC.

THIS DOCUMENT IS SOLELY THE PROPERTY OF AQ-MATIC REPRODUCTION, USE DISCLOSURE, OR TRANSMISSION OF THIS DOCUMENT OR DETAILS CONTAINED HEREIN, IN PART OR IN WHOLE, IS PROHIBITED WITHOUT THE WRITTEN CONSENT OF AQ-MATIC ENGINEERING. THIS DOCUMENT AND ANY COPIES SHALL BE RETURNED TO AQ-MATIC UPON WRITTEN REQUEST.

DO NOT SCALE DRAWING. DIMS. ARE IN INCHES (mm) INTERPRET DIMS AND TOLERANCES PER ASME Y14.5M -1994 UNLESS OTHERWISE SPECIFIED:  
CORNER FILLETS R.005-.020 (.127-.508)  
TOLERANCES:  
ANGLES: ± 1°  
1 PLACE .X: ± 0.15 [0.38]  
2 PLACE .XX: ± 0.1 [0.3]  
3 PLACE .XXX: ± 0.05 [0.13]

THIRD ANGLE PROJECTION

APPROVALS DATE

DRAWN TRK 4/18/18

CHECKED BY

APPROVED

AQ Matic

SERIES 48 STAGER ASSEMBLY DRAWING

B DWG NO. 1077882 REV. E

SCALE SOLIDWORKS FORMAT SHEET 1 OF 2

4

3

2

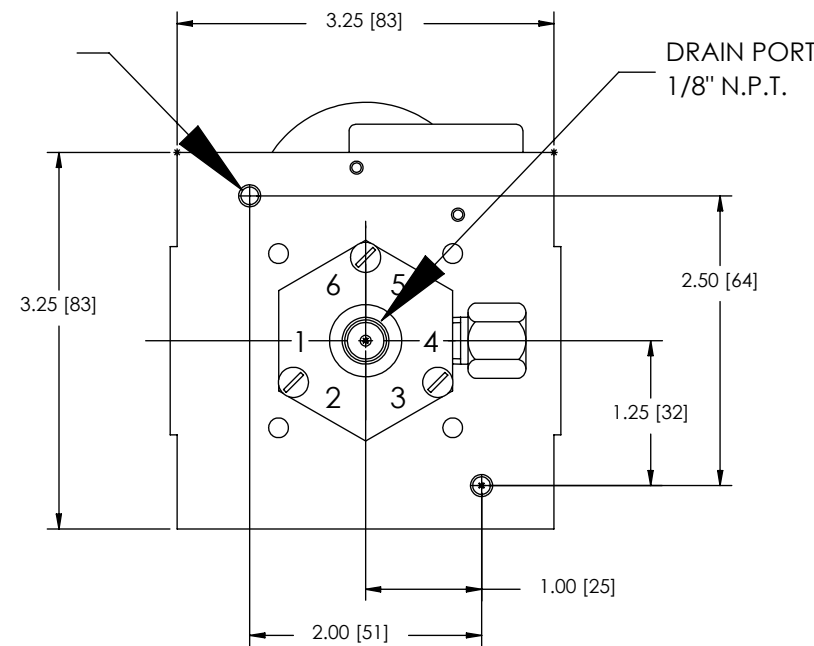
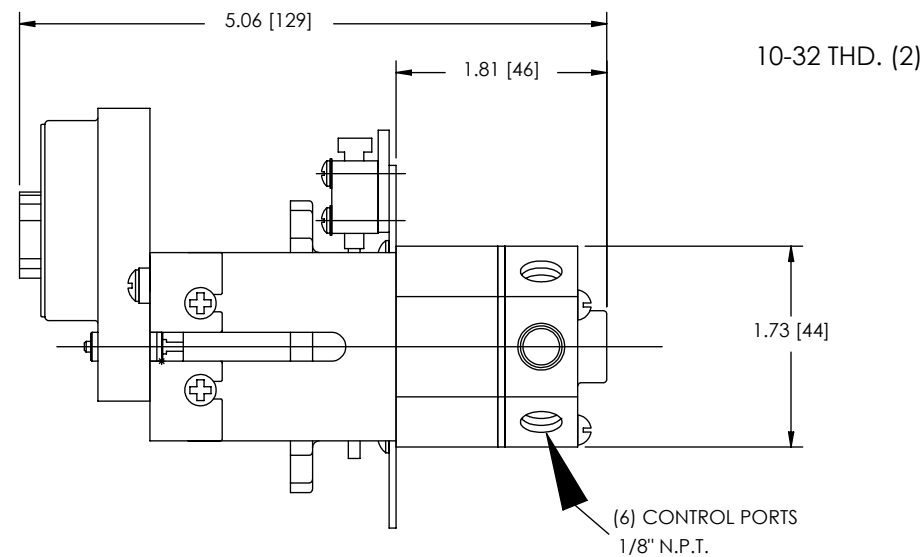
1

4

3

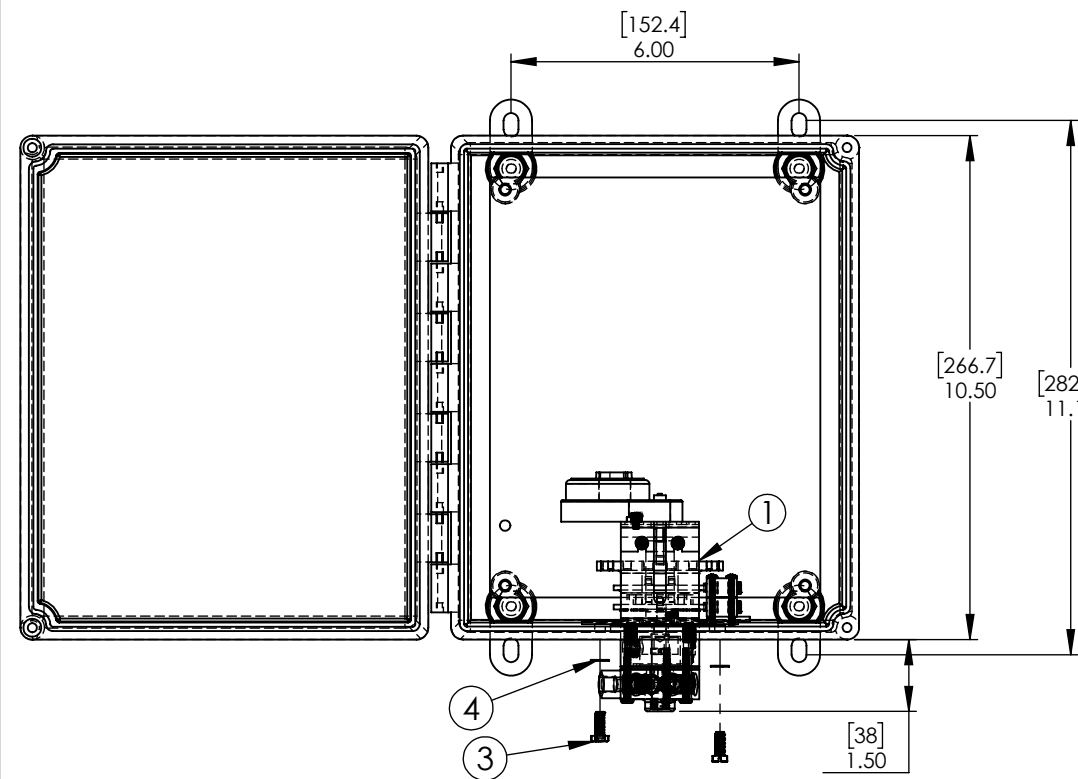
2

1

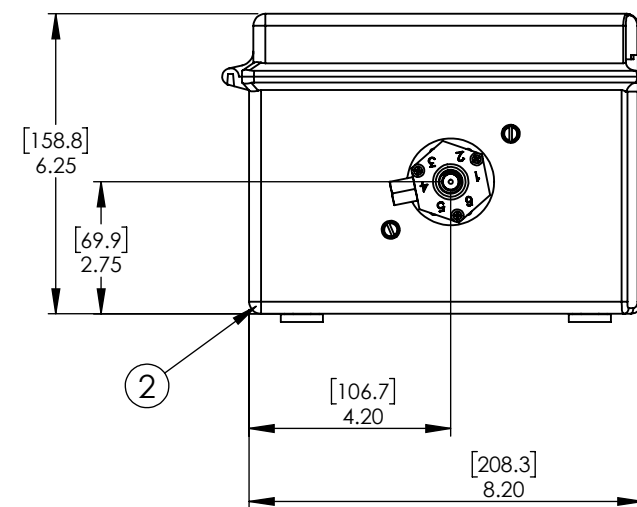


REVISIONS				
ECN	REV.	DESCRIPTION	DATE	APP'D
1246	E	UPDATED TO AQ TEMPLATE, PART TO PRINT	4/18/18	

NO.	DESCRIPTION	PART NO.	QTY.
1	STAGER ASSEMBLY	R048-____-__B1	
2	ENCLOSURE NEMA 4XFG	1077969	1
3	PAN HEAD MACHINE SCREW 10-32 x 1/2" LONG	3014200	2
4	LOCKWASHER (NO. 10)	1078992	2



**NEMA 4X FIBERGLASS ENCLOSURE**



**NOTE:**

1. STAGERS CAN BE MANUALLY ADVANCED BY ROTATING THE CAM CLOCKWISE.
2. PIPING SCHEMATICS AVAILABLE UPON REQUEST.
3. ALL STAGERS EXCEPT 48-03 & 48-TA SUPPLIED WITH NOTCHED CAM FOR PULSE OUTPUT TYPE TIMERS. 48-03 & 48-TA SUPPLIED WITH BUTTERFLY CAM FOR "UP/DOWN" OUTPUT TYPE TIMERS.

SERIES NO.	PORTS VENTED IN POSITION						DESCRIPTION
	A	B	C	D	E	F	
48-00	1,2 (SVC)	-	3,4 (BW)	-	5,6 (BR)	1,6 (FR)	4 POS. SOFTENER
48-01	1,2 (SVC)	-	3,4 (BW)	-	-	1,6 (FR)	3 POS. FILTER
48-03						1,6 (FR)	4 POS. SOFTENER (SEE NOTE 3)
48-04	1,2 (SVC)	-					2 POS. FILTER
48-12			3,4 (BW)	4,5 (BR)	-	1,6 (FR)	4 POS. SOFTENER W/UPFLOW BRINE
48-85	2 (BW)	3 (BW)	4 (BW)	5 (BW)	6 (SVC)	1 (BW)	5 TANK SEQUENTIAL FILTER
48-TA	1	-	2	-	-	-	2 TANK ALTERNATOR (SEE NOTE 3)
48-TB	1	2	1	2	1	2	2 TANK ALTERNATOR

INCHES [MILLIMETERS]

THIS DOCUMENT IS SOLELY THE PROPERTY OF AQ-MATIC REPRODUCTION, USE DISCLOSURE, OR TRANSMISSION OF THIS DOCUMENT OR DETAILS CONTAINED HEREIN, IN PART OR IN WHOLE, IS PROHIBITED WITHOUT THE WRITTEN CONSENT OF AQ-MATIC ENGINEERING. THIS DOCUMENT AND ANY COPIES SHALL BE RETURNED TO AQ-MATIC UPON WRITTEN REQUEST.

DO NOT SCALE DRAWING. DIMS. ARE IN INCHES (mm) INTERPRET DIMS AND TOLERANCES PER ASME Y14.5M -1994 UNLESS OTHERWISE SPECIFIED:  
CORNER FILLETS R.005-.020 (.127-.508)  
TOLERANCES:  
ANGLES: ±1°  
1 PLACE .X: ±.015 [0.38]  
2 PLACE .XX: ±.01 [0.3]  
3 PLACE .XXX: ±.005 [0.13]

THE COMPONENT, PART, OR ASSEMBLY DESCRIBED IN THIS DOCUMENT MUST COMPLY WITH THE EU (EUROPEAN UNION) DIRECTIVE: RoHS DIRECTIVE 2011/65/EC.

THIRD ANGLE PROJECTION

**AQ Matic**

APPROVALS	DATE
DRAWN TRK	4/18/18
CHECKED BY	
APPROVED	

**SERIES 48 STAGER ASSEMBLY DRAWING**

B	DWG NO. 1077882	REV. E
SCALE	SOLIDWORKS FORMAT	SHEET 2 OF 2

4

3

2

1